

HD IR Waterproof Fixed Network Camera User's Manual

Version 1.0.1

Welcome

Thank you for purchasing our network camera!

This user's manual is designed to be a reference tool for your system.

Please read the following safeguard and warnings carefully before you use this series product!

Please keep this user's manual well for future reference!

Important Safeguards and Warnings

1 . Electrical safety

All installation and operation here should conform to your local electrical safety codes.

The power shall conform to the requirement in the SELV (Safety Extra Low Voltage) and the Limited power source is rated 12V DC or 24V AC in the IEC60950-1. (Refer to general introduction) **Please note: Do not connect two power supplying sources to the device at the same time; it may result in device damage!**

We assume no liability or responsibility for all the fires or electrical shock caused by improper handling or installation.

We are not liable for any problems caused by unauthorized modification or attempted repair.

2 . Transportation security

Heavy stress, violent vibration or water splash are not allowed during transportation, storage and installation.

3 . Installation

Do not apply power to the camera before completing installation.

Please install the proper power cut-off device during the installation connection.

Always follow the instruction guide the manufacturer recommended.

4 . Qualified engineers needed

All the examination and repair work should be done by the qualified service engineers.

We are not liable for any problems caused by unauthorized modifications or attempted repair.

5 . Environment

This series network camera should be installed in a cool, dry place away from direct sunlight, inflammable, explosive substances and etc.

Please keep it away from the electromagnetic radiation object and environment.

Please make sure the CCD (CMOS) component is out of the radiation of the laser beam device.

Otherwise it may result in CCD (CMOS) optical component damage.

Please keep the sound ventilation.

Do not allow the water and other liquid falling into the camera.

Thunder-proof device is recommended to be adopted to better prevent thunder.

The grounding studs of the product are recommended to be grounded to further enhance the reliability of the camera.

6. Daily Maintenance

Please shut down the device and then unplug the power cable before you begin daily maintenance work.

Do not touch the CCD (CMOS) optic component. You can use the blower to clean the dust on the lens surface.

Always use the dry soft cloth to clean the device. If there is too much dust, please use the water to dilute the mild detergent first and then use it to clean the device. Finally use the dry cloth to clean the device.

Please put the dustproof cap to protect the CCD (CMOS) component when you do not use the camera. Dome enclosure is the optical component, do not touch the enclosure when you are installing the device or clean the enclosure when you are doing maintenance work. Please use professional optical clean method to clean the enclosure. Improper enclosure clean method (such as use cloth) may result in poor IR effect of camera with IR function.

7. Accessories

Be sure to use all the accessories recommended by manufacturer.

Before installation, please open the package and check all the components are included.

Contact your local retailer ASAP if something is broken in your package.

Accessory Name	Amount
Network Camera Unit	1
Quick Start Guide	1
Installation Accessories Bag	1
CD	1

Table of Contents

1	General Introduction	1
1.1	Overview	1
1.2	Features	1
1.3	Specifications	2
1.3.1	Performance	2
1.3.2	Factory Default Setup	3
2	Structure	9
2.1	Multiple-function Combination Cable	9
2.2	Framework and Dimension	9
3	Device Installation	11
4	Quick Configuration Tool	13
4.1	Overview	13
4.2	Operation	13
5	Web Operation	16
5.1	Network Connection	16
5.2	Login and Logout	16
6	FAQ	19
	Appendix Toxic or Hazardous Materials or Elements	20

1 General Introduction

1.1 Overview

This series network camera integrates the traditional camera and network video technology. It adopts video data collection, transmission together. It can connect to the network directly without any auxiliary device.

This series network camera uses standard H.264 video compression technology, which maximally guarantees the video quality.

It supports the IR night vision function. In the night environments, the device can use the IR light to highlight the object which is suitable for the surveillance function in the low illumination environments. The waterproof design conforms to the IP 66 level. It has the sound waterproof function suitable for use in the outdoor environments.

It can be used alone or used in a network area. When it is used lonely, you can connect it to the network and then use a network client-end. Due to its multiple functions and various uses, this series network camera is widely used in many environments such office, bank, road monitor and etc.

1.2 Features

User Management	<ul style="list-style-type: none">● Different user rights for each group, one user belongs to one group.● The user right shall not exceed the group right.
Storage Function	<ul style="list-style-type: none">● Support central server backup function in accordance with your configuration and setup in alarm or schedule setting● Support record via Web and the recorded file are storage in the client-end PC.● Support network storage function such as FTP.
Network Monitor	<ul style="list-style-type: none">● It supports one-channel video data transmit to network terminal and then decode. Delaying time is within 270ms (network bandwidth support needed)● Max supports 20 connections and output bandwidth is 32Mbps. System refuses new connection request once it exceeds the bandwidth threshold.● Adopt the following video transmission protocol: HTTP, TCP, UDP, MULTICAST, RTP/RTCP, RTSP and etc.● Support web access.
Network Management	<ul style="list-style-type: none">● Realize network camera configuration and management via Ethernet.● Support device management via web or client-end.
Power	<ul style="list-style-type: none">● External power adapter DC 12V.● Support PoE. (Please refer to specifications.) <p>Warning! Do not connect these two power supplying sources to the device at the same time; it may result in device damage!</p>
Assistant Function	<ul style="list-style-type: none">● Log function● Support system resource information and running status real-time display.● Day/Night mode auto switch.● Support picture parameter setup such as electronic shutter and gain setup.● Support motion detect.● Backlight compensation: screen auto split to realize backlight compensation to adjust the bright.● Support video watermark function to avoid vicious video modification.● Built-in IR light. Support IR night vision.● The enclosure conforms to the IP 66 protection. Has the waterproof function.

1.3 Specifications

1.3.1 Performance

Please refer to the following sheet for network camera performance specification.

Model Parameter		IPC- HFW3200SP/N Series	IPC- HFW2200SP/N Series	IPC- HFW2105S	IPC- HFW2100S
System	Main Processor	TI Davinci high performance DSP			
	OS	Embedded LINUX			
	System Resources	Support real-time network, local record, and remote operation at the same time.			
	User Interface	Remote operation interface such as WEB, DSS, PSS			
	System Status	Bit stream statistics, log, and software version.			
Video Parameter	Image Sensor	1/2.8" CMOS		1/3 " CMOS	
	Pixel	1920(H)*1080(V)		1280 (H)*960 (V)	
	Gain Control	Fixed/Auto			
	White Balance	Manual/Auto			
	Exposure Mode	Manual/Auto PAL: It ranges from 1/4 to 1/10000 NTSC: It ranges from 1/3 to 1/10000			
	Video Compression Standard	H264/ H.264B/MJPEG			
	Video Rate	Frame	PAL: Main stream(1920*1080@25fps), extra stream (704*576@25fps) NTSC: Main stream(1920*1080@30fps), extra stream(704*480@30fps)		PAL: Main stream(1280*960@15fps), extra stream (352*288@15fps) Main stream(1280*720@25fps), extra stream (704*576@25fps) NTSC: Main stream(1280*960@15fps), extra stream(352*240@15fps) Main stream(1280*720@30fps), extra stream(704*480@30fps)
	Video Bit Rate		H.264: 56Kbps-8192Kbps. MJPEG is adjustable and bit rate is adjustable. Support customized setup.		H.264: 56Kbps-6144Kbps. MJPEG is adjustable and bit rate is adjustable. Support customized setup.

	Video Flip	Support mirror. Support flip function.		
	Snapshot	Max 1f/s snapshot. File extension name is JPEG.		
	Privacy Mask	Supports max 4 privacy mask zones		
	Video Setup	Support parameter setup such as bright, contrast.		
	Video Information	Channel title, time title, motion detect, camera masking.		
	Lens	3.6mm, 6mm, 8mm. Fixed focus.		
	Lens Interface	M12. Lens is the default accessories		
Video	Motion Detect	396 (18*22) detection zones; sensitivity level ranges from 1 to 6 (The 6 th level has the highest sensitivity) Activation event: video storage, image snapshot, log, email function and etc.		
Record and Backup	Storage Management	Support display local storage status		
Network	Wire Network	1- channel wire Ethernet port, 10/100 Base-T Ethernet		
	Network Protocol	Standard HTTP, TCP/IP, ARP, IGMP, ICMP, RTSP, RTP,UDP, RTCP, SMTP, FTP, DHCP, DNS, DDNS, PPPOE, UPNP, NTP, Bonjour, SNMP.		
	Remote Operation	Monitor, system setup, file download, log information, maintenance , upgrade and etc		
	Restore Default Setup	Reset button (on LED panel)		
	IR light	IR light 20-30M.		
General Parameter	Power	DC 12V power and PoE.	DC 12V	DC 12V/PoE
	Power Consumption	6.5 W MAX	6W MAX	
	Working Temperature	-10℃~+60℃		
	Working Humidify	10%~90%		
	Dimensions(mm)	70*66*160		
	Weight	0.5Kg（Excluding box）		
	Installation	Bracket installation		

1.3.2 Factory Default Setup

Please refer to the following sheet for factory default setup information.

Setup		Item	Default Setup			
			IPC-HFW3200SP /N Series	IPC-HFW2200SP /N Series	IPC-HFW2105S	IPC-HFW2100S
Camera	Conditions	Brightness	50			
		Contrast	50			
		Saturation	50			
		Sharpness	50			
		Anti-flicker	Outdoor			
		Exposure Mode	Auto			
		Gain Adjust	0-50			

Setup	Item			Default Setup			
				IPC-HFW3200SP /N Series	IPC-HFW2200SP /N Series	IPC-HFW2105S	IPC-HFW2100S
		Scene Mode		Auto			
		Day/night Mode		Auto			
		BLC		Off			
		Mirror		Off			
		Flip		Off			
	Video	Video bit stream	Main Stream	Bit stream type	General		
				Encode mode	H.264		
				Resolution	1080P (1920*1080)		720P (1280*720)
				Frame Rate (FPS)	PAL:25 NTSC:30		
				Bit Rate Type	CBR		
				Recommended Bit	3584-8192 Kb/S		1536-6144 Kb/S
				Bit Rate	8192		4096
				Watermark	Enable		
				Watermark character	DigitalCCTV		
			Sub Stream	Enable	Enable		
				Bit stream type	General		
				Encode mode	H.264B		
				Resolution	PAL: CIF(352*288) NTSC: CIF(352*240)	CIF(352*288)	CIF(352*288) PAL: CIF(352*288) NTSC: CIF(352*240)
				Frame Rate (FPS)	PAL:25 NTSC:30	25	25 PAL:25 NTSC:30
				Bit Rate Type	CBR		
				Recommended Bit	192-1024Kb/S		
				Bit Rate	1024		
		Snapshot		Snapshot Type	General		
				Image Size	1080P (1920*1080)		720P (1280*720)

Setup	Item	Default Setup			
		IPC-HFW3200SP /N Series	IPC-HFW2200SP /N Series	IPC-HFW2105S	IPC-HFW2100S
		Quality	Better		
		Interval	1s		
	Video Overlay	Privacy Mask	Disable		
		Channel Title	Enable		
		Time Title	Enable		
	Path	Snapshot Path	C:\PictureDownload		
		Record Path	C:\RecordDownload		
Network	TCP/IP	Host Name	IPC		
		Ethernet Card	Wire		
		Mode	Static		
		Mac Address	Device MAC address when it is shipped out of the factory		
		IP Version	IPV4		
		IP Address	192.168.1.108		
		Subnet Mask	255.255.255.0		
		Default Gateway	192.168.1.1		
		Preferred DNS	8.8.8.8		
		Alternate DNS	8.8.8.8		
		Enable ARP/Ping set device IP address service	Enable		
	Connection	Max Connection	10		
		TCP Port	37777		
		UDP Port	37778		
		HTTP Port	80		
		RTSP Port	554		
		HTTPs enable	Disable		
		HTTPs Port	443		
	PPPoE	Enable	Disable		

Setup	Item		Default Setup			
			IPC-HFW3200SP /N Series	IPC-HFW2200SP /N Series	IPC-HFW2105S	IPC-HFW2100S
		Username	none			
		Password	N/A			
	DDNS	Server Type	Disable, CN99 DDNS			
		Server IP	none			
		Server Port	80			
		Domain Name	none			
		User	none			
		Password	****			
		Update Period	10 minutes			
	IP Filter	Trusted sites	Disable			
	SMTP(Email)	SMTP Server	none			
		Port	25			
		Anonymity	Disable			
		User Name	anonymity			
		Password	****			
		Sender	none			
		Authentication (Encryption mode)	N/A			
		Title (Subject)	IPC Message			
		Attachment	N/A			
		Mail Receiver	0 seconds			
		Email Test	Disable, interval=60 seconds			
	UPnP	Enable UPnP	Disable			
	SNMP	SNMP Port	161			
		Read Community	public			
		Write Community	private			
		Trap	N/A			

Setup	Item		Default Setup			
			IPC-HFW3200SP /N Series	IPC-HFW2200SP /N Series	IPC-HFW2105S	IPC-HFW2100S
		Address				
		Trap Port	162			
	Bonjour	Enable	Enable			
		Server Name	SN. It depends on the actual device.			
	Multicast	Multicast Address	239.255.42.42			
		Port	36666			
	QoS	Real-time Monitor	0			
		Command	0			
Event	Video detect	Motion Detect	Enable	Disable		
			Anti-dither	5 seconds		
			Sensitivity	3		
			Record Channel	Enable		
			Record Delay	10 seconds		
			Send Email	Disable		
			Snapshot	Disable		
		Video Masking	Enable	Disable		
			Record Channel	Enable		
			Record Delay	10 seconds		
			Send Email	Disable		
			Snapshot	Disable		
		Disconnection	Enable	Disable		
			Record	Enable		
			Record Delay	10 seconds		
		IP Conflict	Enable	Disable		
			Record	Enable		
			Relay out Delay	10 seconds		
Storage	Storage	FTP	Enable FTP	Disable		
			Server IP	N/A		
			Port	21		
			Username	anonymity		
			Password	N/A		
			Remote path	share		

Setup	Item		Default Setup				
			IPC-HFW3200SP /N Series	IPC-HFW2200SP /N Series	IPC-HFW2105S	IPC-HFW2100S	
	Record Control		Pack Duration	8 minutes			
			Pre-record	5 seconds			
			Disk Full	Overwrite			
			Record Mode	Auto			
			Record Stream	Main stream			
System	General	Local Host	Device No	Device manufacture SN			
			Language	English			
			Video Standard	PAL			
		Date time and	Date Format	Y-M-D			
			Time Format	24H			
			Time Zone	GMT+08:00			
			System Time	Sync			
			DST	Disable			
			DST Type	Week			
			Start Time	00:00:00 of the first Sunday of the month			
			End Time	00:00:00 of the second Monday of the month			
			NTP	Disable			
			NTP Server	clock.isc.org			
			Port	37			
			Update Period	10 minutes			
	Auto Maintenance	Auto Reboot	Enable Each 02:00 Tuesday				
		Auto Delete Old Files	Disable				

2 Structure

2.1 Multiple-function Combination Cable

You can refer to the following figure for multiple-function combination cable information. See Figure 2-1.

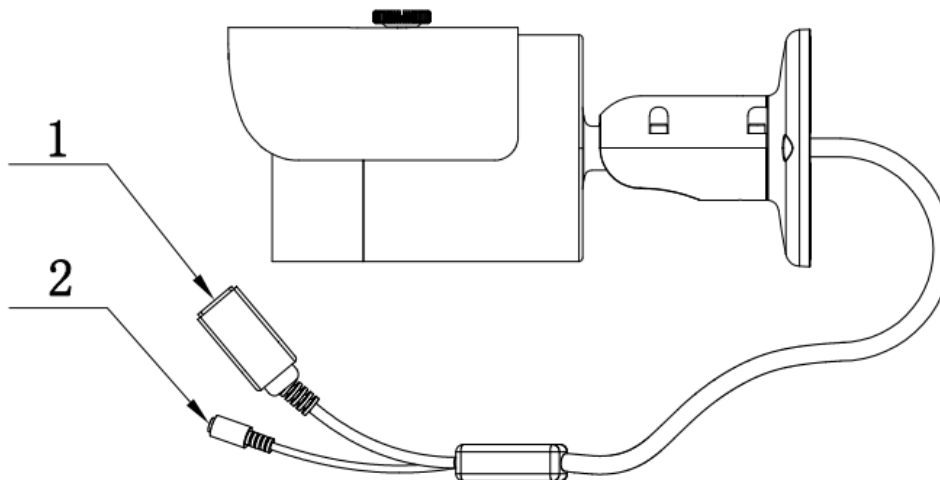


Figure 2-1

Please refer to the following sheet for detailed information.

SN	Port Name	Function	Connection	Note
1.	LAN	Network port	Ethernet port	Connect to standard Ethernet cable.
2	DC12V	Power input port	/	Power input port. Input DC 12V.

2.2 Framework and Dimension

Please refer to the following two figures for dimension information. The unit is mm. See Figure 2-2 and Figure 2-3.

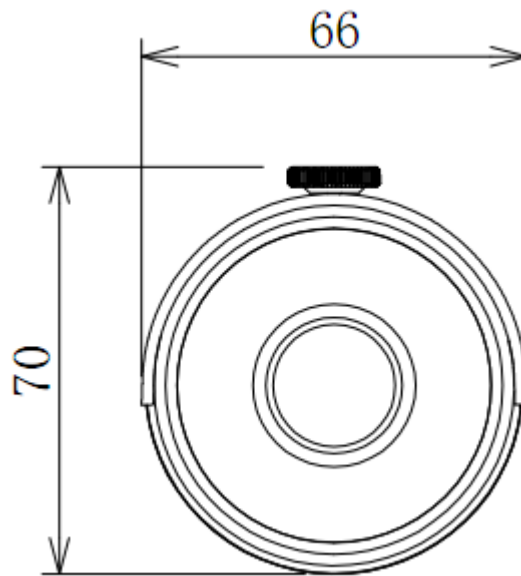


Figure 2-2

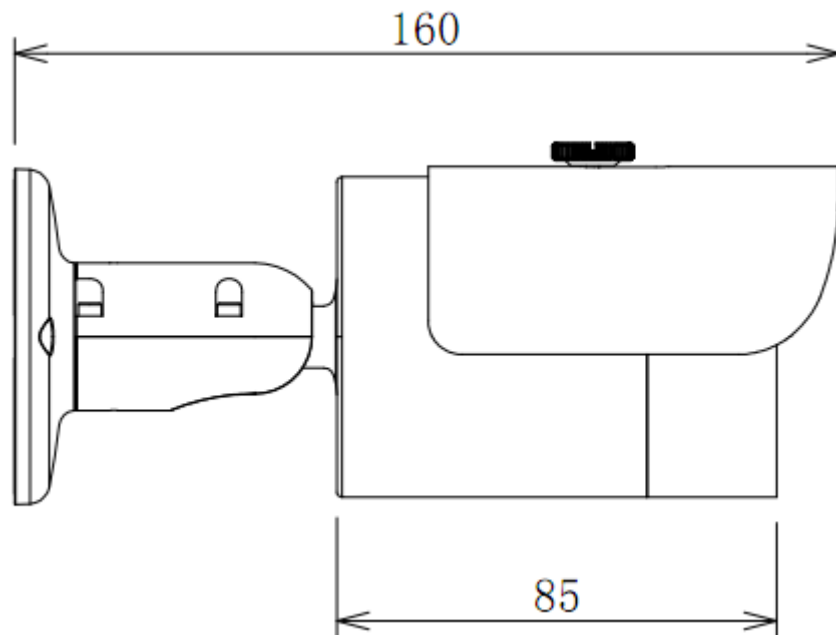


Figure 2-3

3 Device Installation

Important

The installation wall shall min sustain 3X weight of the bracket and camera.

Please follow the steps listed below to install the device. Please refer to Figure 3-1 and Figure 3-2 for reference.

Step 1

Paste the installation map on the surface of the wall or the ceiling.

Step 2

Dig the installation holes according to the installation map.

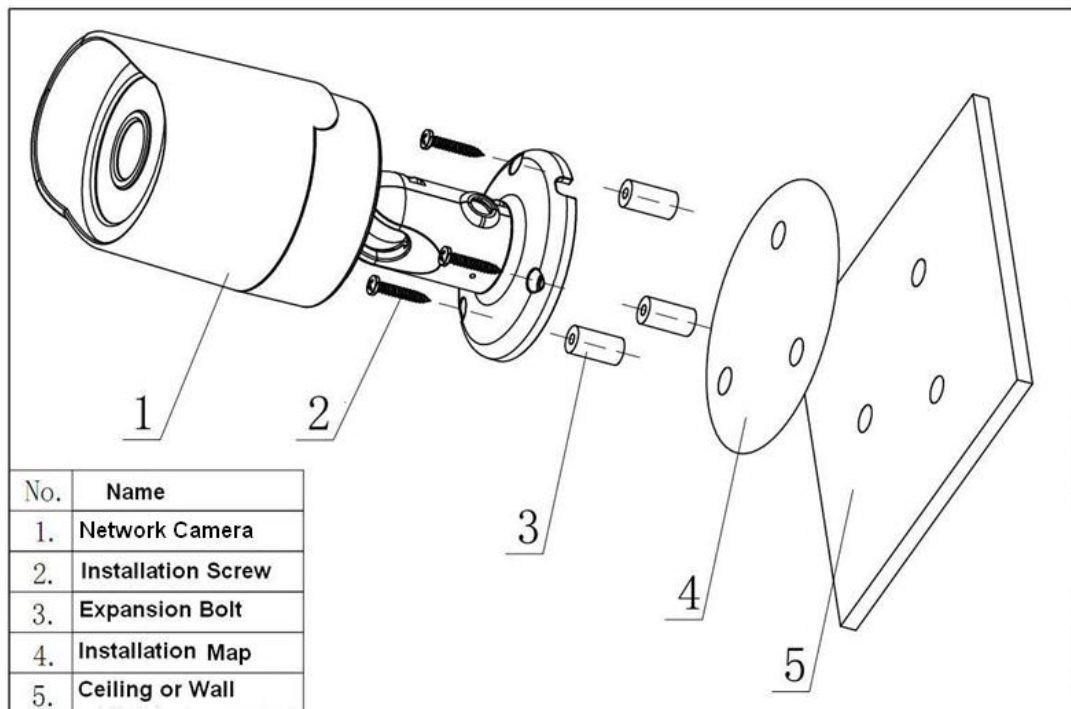


Figure 3-1

Step 3

Open the accessories bag and then take the expansion bolt out. Insert the expansion bolt into the installation holes.

Step 4

Take the screws from the accessories bag and then use them to secure the device on the installation surface of the wall or the ceiling. The sun shield of the device can move forward or backward. Please secure the set screw of the sun shield after you fixed the device.

Step 5

Connect the corresponding cables.

Step 6

Use the cross-head screwdriver to loosen the adjust screw.

Step 7

Turn the device in different directions to make it suitable for the monitor position.

Step 8

Use the cross-head screwdriver to fix the adjust screw firmly.

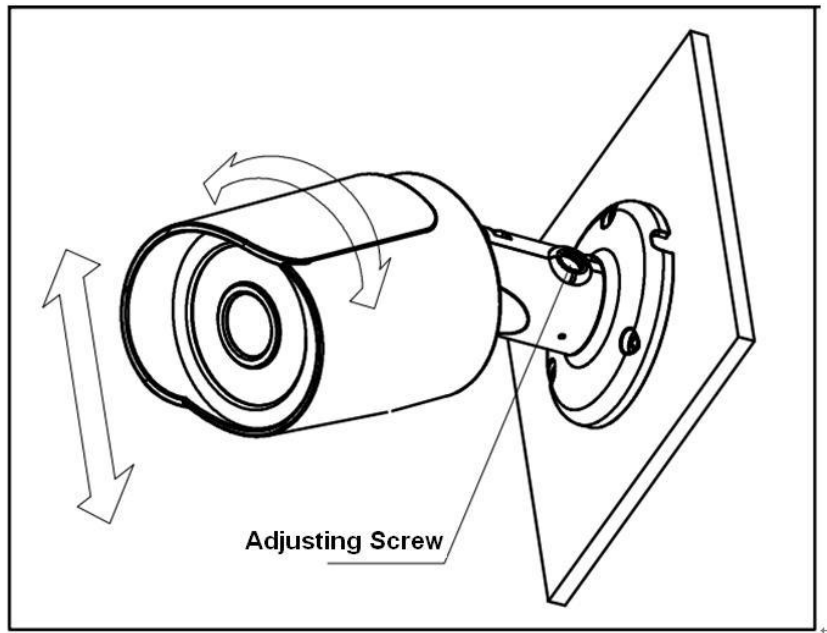


Figure 3-2

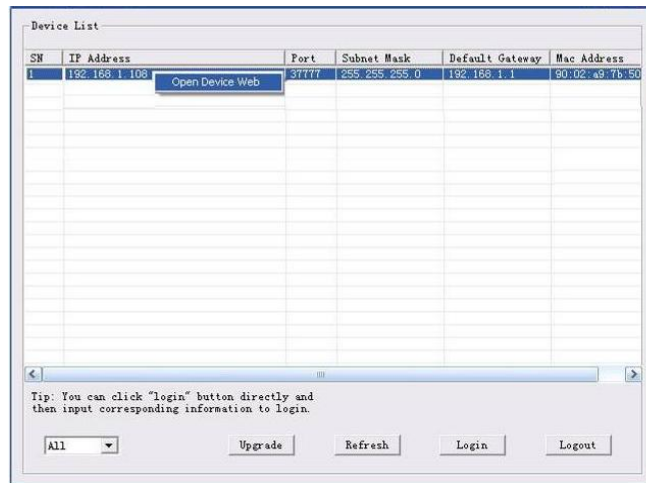


Figure 4-2

Select the “Open Device Web” item; you can go to the corresponding web login interface. See Figure 4-3.

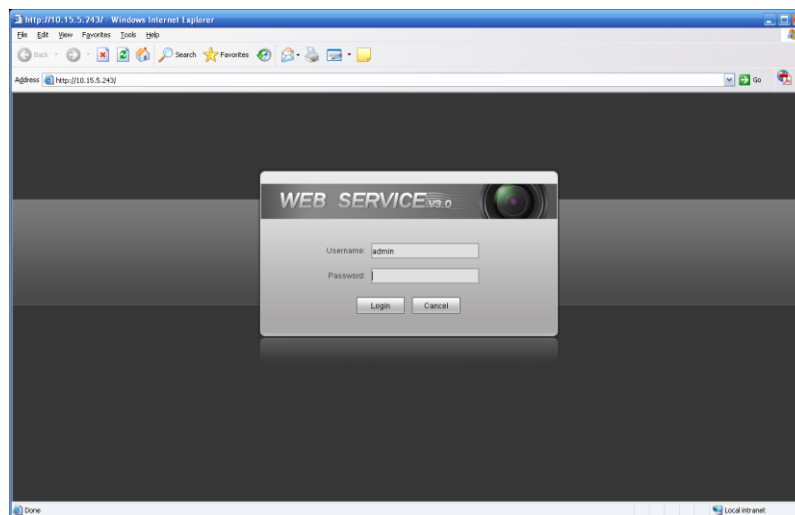


Figure 4-3

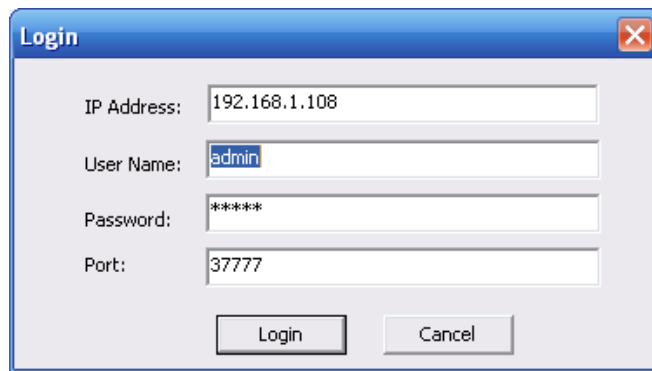
If you want to modify the device IP address without logging in the device web interface, you can go to the configuration tool main interface to set.

In the configuration tool search interface (Figure 4-1), please select a device IP address and then double click it to open the login interface. Or you can select an IP address and then click the Login button to go to the login interface. See Figure 4-4.

In Figure 4-4, you can view device IP address, user name, password and port. Please modify the corresponding information to login.

Please note the port information here shall be identical with the port value you set in TCP port in Web Network interface. Otherwise, you can not login the device.

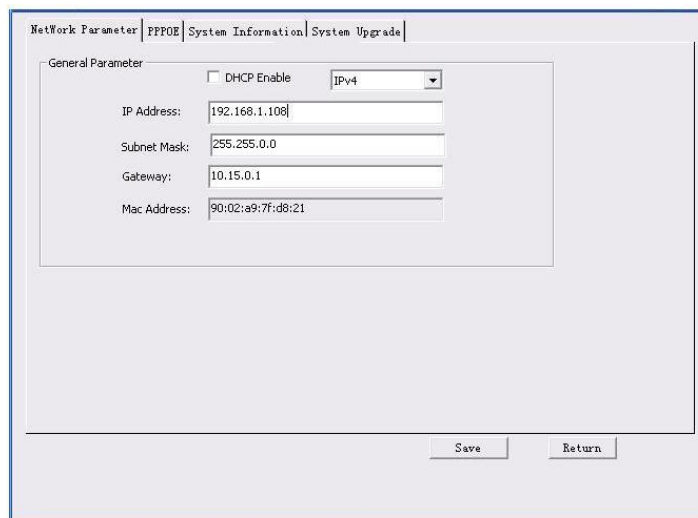
If you are using device background upgrade port 3800 to login, other setups are all invalid.



A login dialog box titled "Login" with a close button (X) in the top right corner. It contains four input fields: "IP Address" with the value "192.168.1.108", "User Name" with the value "admin", "Password" with the value "*****", and "Port" with the value "37777". At the bottom, there are two buttons: "Login" and "Cancel".

Figure 4-4

After you logged in, the configuration tool main interface is shown as below. See Figure 4-5.



The main interface of the configuration tool. It has a tabbed menu at the top with four tabs: "Network Parameter", "PPPoE", "System Information", and "System Upgrade". The "Network Parameter" tab is selected. Below the tabs, there is a "General Parameter" section. It includes a checkbox for "DHCP Enable" (which is unchecked) and a dropdown menu for "IPv4" (which is set to "IPv4"). Below these are five input fields: "IP Address" (192.168.1.108), "Subnet Mask" (255.255.0.0), "Gateway" (10.15.0.1), and "Mac Address" (90:02:a9:7f:d8:21). At the bottom right, there are two buttons: "Save" and "Return".

Figure 4-5

For detailed information and operation instruction of the quick configuration tool, please refer to the *Quick Configuration Tool User's Manual* included in the resources CD.

5 Web Operation

This series network camera product supports the Web access and management via PC. Web includes several modules: monitor channel preview, system configuration, alarm and etc.

5.1 Network Connection

Please follow the steps listed below for network connection.

- Make sure the network camera has connected to the network properly.
- Please set the IP address, subnet mask and gateway of the PC and the network camera respectively. Network camera default IP address is 192.168.1.108. Subnet mask is 255.255.255.0. Gateway is 192.168.1.1
- Use order ping `***.***.***.***(* network camera address)` to check connection is OK or not.

5.2 Login and Logout

Open IE and input network camera address in the address bar.

For example, if your camera IP is 192.168.1.108, then please input `http:// 192.168.1.108` in IE address bar. See Figure 5-1.

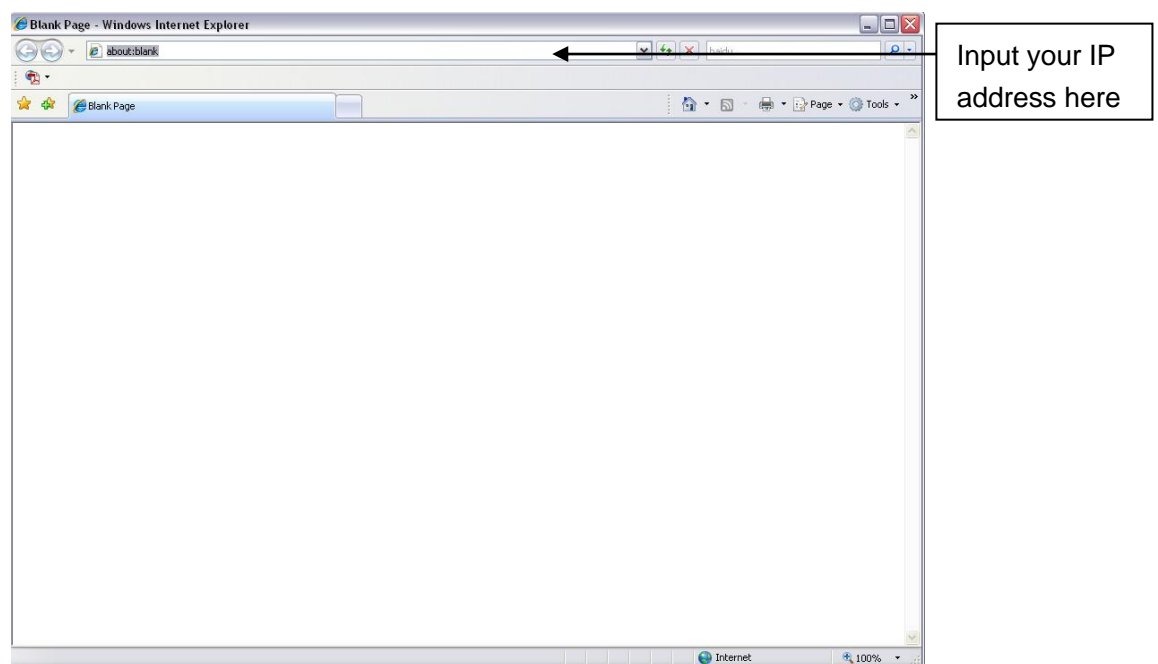


Figure 5-1

The login interface is shown as below. See Figure 5-2.

Please input your user name and password.

Default factory name is admin and password is admin.

Note: For security reasons, please modify your password after you first login.

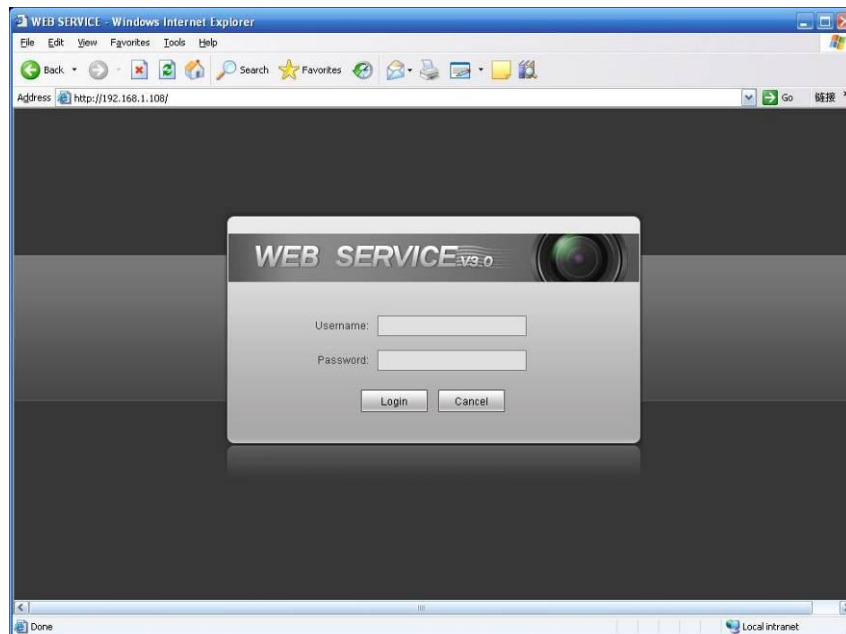


Figure 5-2

If it is your first time to login, system pops up warning information to ask you whether install control webrec.cab or not after you logged in for one minute. Please click OK button, system can automatically install the control. When system is upgrading, it can overwrite the previous Web too. If you can't download the ActiveX file, please check whether you have installed the plug-in to disable the control download. Or you can lower the IE security level. See Figure 5-3.

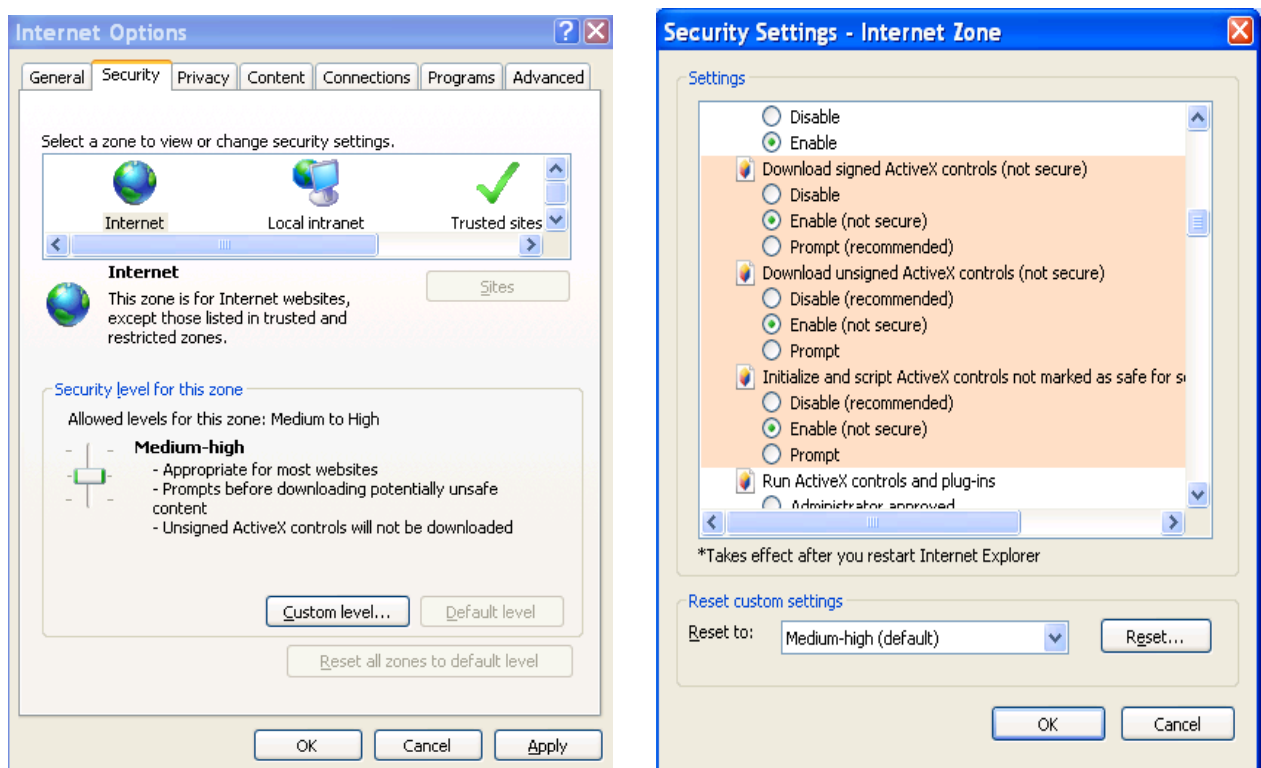


Figure 5-3

After you logged in, you can see the main window. See Figure 5-4.

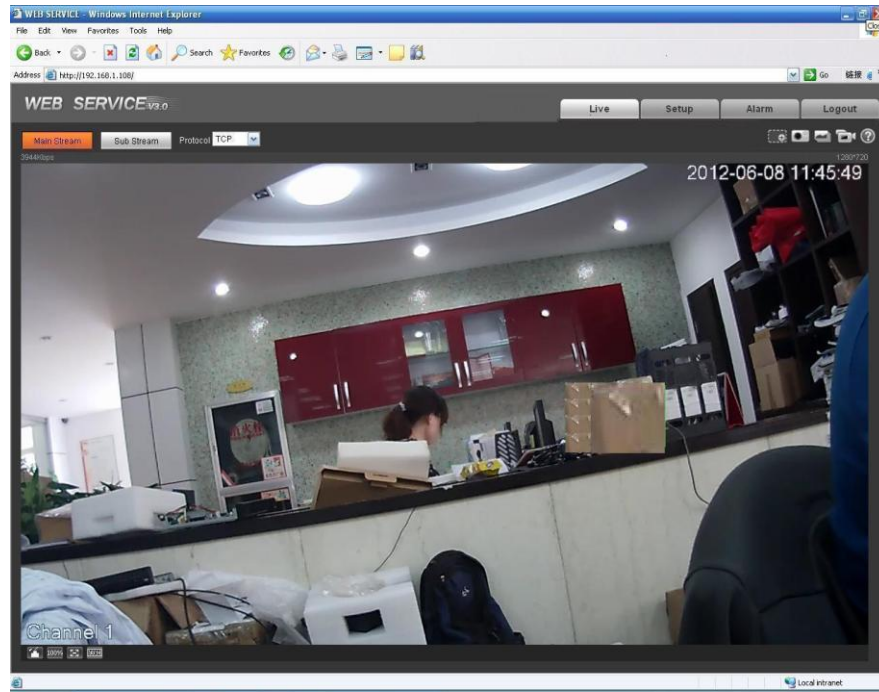


Figure 5-4

Please refer to the Web Operation Manual included in the resource CD for detailed operation instruction.

6 FAQ

Bug	
I can not boot up the device or operate properly.	Please click RESET button for at least five seconds to restore factory default setup.
The water leakage occurred.	<p>The unauthorized front or rear cap remove many result in water leakage.</p> <p>The glass front cap has sustained heavy push or strike.</p> <p>The waterproof plug of the rear cap becomes loosen.</p>
IR video is poor.	<p>Do not use the proper supplying power. The IR light can not turn on completely.</p> <p>The object is out of the IR distance range of current device.</p> <p>IR-CUT does not turn to the night mode. The photosensitive chip of the front-end can not sense the IR light.</p>
I can not upgrade the device via network.	When network upgrade operation failed, you can use port 3800 to continue upgrade.
I can not login the client-end or the WEB.	<ul style="list-style-type: none"> ● For Windows OS 98 or Windows ME user, if you can not install the client-end or can not view after the installation. We recommend the win2000sp4 OS or install the client-end of the low version. ● The Active X control is blocked. ● The display card version shall be dx8.1 or higher. ● Network connection error occurred. ● Invalid network setup. ● Invalid user name or password.
I can not play the download file.	<ul style="list-style-type: none"> ● There is no player. ● There is no DX8.1 or higher. ● For the MEDIA PLAYER, there shall be Div X503Bundle.exe plugin if you play the .AVI file. ● For Windows XP user, you need to install the plugin DivX503Bundle.exe and ffdsho-2004 1012.exe.
To guarantee setup update	After you modified the important setup, please reboot the device via the software to make sure the setup has been updated to the storage medium.
Power adapter	<ul style="list-style-type: none"> ● The general power adapter can work ranging from 0℃ to 40 ℃. The device may result in unstable power supply when the temperature exceeds the working temperature. ● Please replace an industry-level power adapter if you are using in the harsh environments.

Appendix Toxic or Hazardous Materials or Elements

Component Name	Toxic or Hazardous Materials or Elements					
	Pb	Hg	Cd	Cr VI	PBB	PBDE
Circuit Board Component	○	○	○	○	○	○
Device Case	○	○	○	○	○	○
Wire and Cable	○	○	○	○	○	○
Packing Components	○	○	○	○	○	○
Accessories	○	○	○	○	○	○

O: Indicates that the concentration of the hazardous substance in all homogeneous materials in the parts is below the relevant threshold of the SJ/T11363-2006 standard.

X: Indicates that the concentration of the hazardous substance of at least one of all homogeneous materials in the parts is above the relevant threshold of the SJ/T11363-2006 standard. During the environmental-friendly use period (EFUP) period, the toxic or hazardous substance or elements contained in products will not leak or mutate so that the use of these (substances or elements) will not result in any severe environmental pollution, any bodily injury or damage to any assets. The consumer is not authorized to process such kind of substances or elements, please return to the corresponding local authorities to process according to your local government statutes.

Note

- This user's manual is for reference only. Slight difference may be found in user interface.
- All the designs and software here are subject to change without prior written notice.
- All trademarks and registered trademarks mentioned are the properties of their respective owners.
- If there is any uncertainty or controversy, please refer to the final explanation of us.
- Please visit our website for more information.