

Dahua HD Mini IR Waterproof Fixed Network Camera User's Manual

DH-IPC-1200SP-W

Version 1.2.5

Delta-Opti, 2016

Zhejiang Dahua Technology CO., LTD

Welcome

Thank you for purchasing our network camera!

This user's manual is designed to be a reference tool for your system.

Please read the following safeguard and warnings carefully before you use this series product!

Please keep this user's manual well for future reference!

Important Safeguards and Warnings

1 . Electrical safety

All installation and operation here should conform to your local electrical safety codes.

The power shall conform to the requirement in the SELV (Safety Extra Low Voltage) and the Limited power source is rated 12V DC or 24V AC in the IEC60950-1. (Refer to general introduction)

Please note: Do not connect two power supplying sources to the device at the same time; it may result in device damage! The product must be grounded to reduce the risk of electronic shock.

We assume no liability or responsibility for all the fires or electrical shock caused by improper handling or installation.

We are not liable for any problems caused by unauthorized modification or attempted repair.

2 . Transportation security

Heavy stress, violent vibration or water splash are not allowed during transportation, storage and installation.

3 . Installation

Do not apply power to the camera before completing installation.

Please install the proper power cut-off device during the installation connection.

Always follow the instruction guide the manufacturer recommended.

4 . Qualified engineers needed

All the examination and repair work should be done by the qualified service engineers.

We are not liable for any problems caused by unauthorized modifications or attempted repair.

5 . Environment

This series network camera should be installed in a cool, dry place away from direct sunlight, inflammable, explosive substances and etc.

Please keep it away from the electromagnetic radiation object and environment.

Please make sure the CCD (CMOS) component is out of the radiation of the laser beam device.

Otherwise it may result in CCD (CMOS) optical component damage.

Please keep the sound ventilation.

Do not allow the water and other liquid falling into the camera.

Thunder-proof device is recommended to be adopted to better prevent thunder.

The grounding studs of the product are recommended to be grounded to further enhance the reliability of the camera.

6. Daily Maintenance

Please shut down the device and then unplug the power cable before you begin daily maintenance work.

Do not touch the CCD (CMOS) optic component. You can use the blower to clean the dust on the lens surface.

Always use the dry soft cloth to clean the device. If there is too much dust, please use the water to dilute the mild detergent first and then use it to clean the device. Finally use the dry cloth to clean the device.

Please put the dustproof cap to protect the CCD (CMOS) component when you do not use the camera. Dome enclosure is the optical component, do not touch the enclosure when you are installing the device or clean the enclosure when you are doing maintenance work. Please use professional optical clean method to clean the enclosure. Improper enclosure clean method (such as use cloth) may result in poor IR effect of camera with IR function.

7. Accessories

Be sure to use all the accessories recommended by manufacturer.

Before installation, please open the package and check all the components are included.

Contact your local retailer ASAP if something is broken in your package.

Accessory Name	Amount
Network Camera Unit	1
Quick Start Guide	1
Installation Accessories Bag	1
CD	1
Warranty Card and Certificate	1

Table of Contents

1	General Introduction	1
1.1	Overview	1
1.2	Features.....	1
1.3	Specifications.....	2
1.3.1	Performance	2
2	Framework.....	9
2.1	Cable.....	9
2.2	Framework and Dimension	10
3	Device Installation	13
4	Quick Configuration Tool	15
4.1	Overview	15
4.2	Operation	15
5	Web Operation	17
5.1	Network Connection.....	17
5.2	Login and Main Interface.....	17
6	FAQ.....	19
	Appendix Toxic or Hazardous Materials or Elements	20

1 General Introduction

1.1 Overview

This series network camera integrates the traditional camera and network video technology. It adopts video data collection, transmission together. It can connect to the network directly without any auxiliary device.

This series network camera uses standard H.264 video compression technology, which maximally guarantees the video quality.

It supports the IR night vision function. In the night environments, the device can use the IR light to highlight the object which is suitable for the surveillance function in the low illumination environments. The built-in waterproof design conforms to the IP 66 level. It has the sound waterproof function suitable for use in the outdoor environments.

It can be used alone or used in a network area. When it is used lonely, you can connect it to the network and then use a network client-end. Due to its multiple functions and various uses, this series network camera is widely used in many environments such as home, office, bank, road monitor and etc.

1.2 Features

User Management	<ul style="list-style-type: none">● Different user rights for each group, one user belongs to one group.● The user right shall not exceed the group right.
Storage Function	<ul style="list-style-type: none">● Support central server backup function in accordance with your configuration and setup in alarm or schedule setting● Support record via Web and the recorded file are storage in the client-end PC.● Support network storage function such as FTP.
Data Transmission	<ul style="list-style-type: none">● Support data transmission via Ethernet.
Network Monitor	<ul style="list-style-type: none">● Network camera supports one-channel video data transmit to network terminal and then decode. Delay is within 270ms (network bandwidth support needed)● Max supports 20 connections.● Adopt the following video transmission protocol: HTTP, TCP, UDP, MULTICAST, RTP/RTCP, RTSP and etc.● Support web access.
Network Management	<ul style="list-style-type: none">● Realize network camera configuration and management via Ethernet.● Support device management via web or client-end.● Support abundant network protocols.
Power	<ul style="list-style-type: none">● External power adapter DC12V.● Support PoE. <p>Warning !</p> <ul style="list-style-type: none">● Do not connect these two power supplying sources to the device at the same time; it may result in device damage!
Assistant Function	<ul style="list-style-type: none">● Log function● Support system resource information and running status real-time display.● Day/Night mode auto switch.(with ICR switch)● Support picture parameter setup such as electronic shutter and gain setup.● Backlight compensation: screen auto split to realize backlight compensation to adjust the bright.

	<ul style="list-style-type: none"> ● Support digital WDR. ● Support video watermark function to avoid vicious video modification. ● Support dual bit streams, ACF.
--	---

1.3 Specifications

1.3.1 Performance

Please refer to the following sheet for network camera performance specification.

Parameter \ Model		IPC-HFW1100S	IPC-HFW1105S
System	Main Processor	High performance DSP	
	OS	Embedded LINUX	
	System Resources	Support real-time network, local record, and remote operation at the same time.	
	User Interface	Remote operation interface such as WEB, DSS, PSS	
	System Status	Bit stream statistics, log, and software version.	
Video Parameter	Image Sensor	1/4-inch CMOS	
	Pixel	1280(H) *720(V)	
	Day/Night Mode	Support day/night mode switch.	
	Gain Control	Fixed/Auto	
	White Balance	Manual/Auto	
	BLC	On/Off	
	Exposure Mode	Auto/Manual It ranges from 1/3 to 1/10000.	
	Video Compression Standard	H.264/H.264B/MJPEG	
	Video Frame Rate	PAL: Main stream(1280*720@25fps) extra stream(704*576@25fps),	
		NTSC: Main stream(1280*720@30fps) extra stream(704*480@30fps),	
	Video Bit Rate	H.264H: 16Kbps-8192Kbps; MJPEG: adjustable and bit rate is adjustable. Support customized setup.	
	Video Flip	Support mirror. Support flip function.	
	Snapshot	Max 1f/s snapshot. File extension name is JPEG.	
	Privacy Mask	Supports max 4 privacy mask zones	
	Video Setup	Support parameter setup such as bright, contrast.	
	Video Information	Channel title, time title, motion detect, tampering.	
	Lens	3.6mm, 6mm. Fixed focus.	
	Lens Interface	M12. Lens is the default accessories	
Video	Motion Detect	396 (18*22) detection zones; sensitivity level ranges from 0 to 100; area threshold ranges from 0 to 100. Activation event: video storage, image snapshot, log, email function and etc.	

Record and Backup	Storage Management	Support display network storage status	
	Wire Network	1-channel wire Ethernet port, 10/100 Base-T Ethernet	
	Network Protocol	Standard HTTP, TCP/IP, ARP, IGMP, ICMP, RTSP, RTP, UDP, RTCP, SMTP, FTP, DHCP, DNS, DDNS, PPPOE, UPNP, NTP, Bonjour, SNMP.	
	Remote Operation	Monitor, system setup, file download, log information, maintenance, upgrade and etc.	
General Parameter	IR light	IR distance 20~30m	
	Power	DC12V power, PoE.	DC12V
	Power Consumption	4.5W MAX	3.6W MAX
	Working Temperature	-30℃~+60℃	
	Working Humidify	≤95%	
	Dimensions(mm)	70*66*155	
	Weight	620g	420g
	Installation	Installation with the bracket.	

Parameter		Model	IPC-HFW2200S-V2/ IPC-HFW1200S	IPC-HFW2205S-V2	IPC-HFW2100S-V2	IPC-HFW2105S-V2
System	Main Processor	High performance DSP				
	OS	Embedded LINUX				
	System Resources	Support real-time network, local record, and remote operation at the same time.				
	User Interface	Remote operation interface such as WEB, DSS, PSS				
	System Status	Bit stream statistics, log, and software version.				
Video Parameter	Image Sensor	1/3-inch CMOS				
	Pixel	2048 (H) *1536 (V)			1280 (H) *960 (V)	
	Day/Night Mode	Support day/night mode switch.				
	Gain Control	Fixed/Auto				
	White Balance	Manual/Auto				
	BLC	On/Off				
	Electronic Shutter	Manual/Auto/Low noise/Low motion blur It ranges from 1/3 to 1/100000.				
	Video Compression Standard	H.264/H.264B/H.264H/MJPEG				
	Video Frame Rate	PAL: Main stream(1920*1080@25fps) extra stream(704*576@25fps), NTSC: Main stream(1920*1080@30fps)			PAL: Main stream(1280*960@25fps) extra stream(704*576@25fps), NTSC: Main stream(1280*960@30fps)	

		extra stream(704*480@30fps),		extra stream(704*480@30fps),	
	Video Bit Rate	H.264H: 16Kbps-8192Kbps; MJPEG: adjustable and bit rate is adjustable. Support customized setup.			
	Video Flip	Support mirror. Support flip function.			
	Snapshot	Max 1f/s snapshot. File extension name is JPEG.			
	Privacy Mask	Supports max 4 privacy mask zones			
	Video Setup	Support parameter setup such as bright, contrast.			
	Video Information	Channel title, time title, motion detect, tampering.			
	Lens	3.6mm, 6mm, 8mm. Fixed focus.			
	Lens Interface	M12. Lens is the default accessories			
Video	Motion Detect	396 (18*22) detection zones; sensitivity level ranges from 0 to 100; area threshold ranges from 0 to 100. Activation event: video storage, image snapshot, log, email function and etc.			
Record and Backup	Record Priority	Manual > video detect > schedule			
	Storage Management	Support NAS storage			
Network	Wire Network	1-channel wire Ethernet port, 10/100 Base-T Ethernet			
	Network Protocol	HTTP, TCP, ARP, RTSP, RTP, UDP, RTCP, SMTP, FTP, DHCP, DNS, DDNS, PPPOE, IPv4/v6, QoS, UPnP, NTP, HTTPS, Bonjour			
	Remote Operation	Monitor, system setup, file download, log information, maintenance , upgrade and etc.			
	Platform Interface Standard	Support ONVIF			
General Parameter	IR light	IR distance 30m			
	Power	DC12V power, PoE. Note: 05 series does not support PoE.			
	Power Consumption	DC 12V 6W MAX			
	Working Temperature	-30℃~+60℃			
	Working Humidify	≤95%			
	Dimensions(mm)	70*66*155			
	Weight (excluding box)	620g	420g	620g	420g
	Installation	Installation with the bracket.			

Model Parameter		IPC-HFW4105S-V2 IPC-HFW4100S-V2	IPC-HFW4305S-V2 IPC-HFW4300S-V2
System	Main Processor	High performance DSP	
	OS	Embedded LINUX	
	System	Support real-time network, local record, and remote operation at the	

	Resources	same time.	
	User Interface	Remote operation interface such as WEB, DSS, PSS	
	System Status	Bit stream statistics, log, and software version.	
Video Parameter	Image Sensor	1/3-inch CMOS	
	Pixel	1280(H)*960(V)	2048(H)*1536(V)
	Day/night	Support day/night mode switch	
	Gain Control	Fixed/Auto	
	White Balance	Manual/Auto	
	BLC	On/Off	
	Exposure Mode	Manual/Auto/Low noise/Low motion blur It ranges from 1/3 to 1/100000.	
	Video Compression Standard	H.264/H.264H/MJPEG	
	Video Frame Rate	PAL: Main stream (1280*960@25fps) extra stream 1 (704*576@25fps) extra stream 2 (1280*720@8fps)	PAL: Main stream (2048*1536@20fps) extra stream 1 (704*576@20fps) extra stream 2 (1280*720@1fps), Main stream (1920*1080@25fps) extra stream 1 (704*576@25fps) extra stream 2(1280*720@11fps),
		NTSC: Main stream (1280*960@30fps) extra stream 1 (704*480@30fps) extra stream 2 (1280*720@1fps)	NTSC: Main stream (2048*1536@20fps) extra stream 1 (704*480@20fps) extra stream 2 (1280*720@1fps), Main stream (1920*1080@30fps) extra stream 1 (704*480@30fps) extra stream 2(1280*720@1fps),
		Note: Extra stream 2's actual frame depends on device max capacity set which can be adjusted within its range.	
	Video Bit Rate	H.264H: 40Kbps-8192Kbps MJPEG: 40Kbps-16384Kbps adjustable and bit rate is adjustable. Support customized setup.	
	Video Flip	Support mirror. Support flip function.	
	Snapshot	Max 1f/s snapshot. File extension name is JPEG.	
	Privacy Mask	Supports max 4 privacy mask zones	
	Video Setup	Support parameter setup such as bright, contrast.	
	Video Information	Channel title, time title, motion detect, tampering, overlay.	
	Lens	3.6mm, 6mm, 8mm. Fixed focus.	
	Lens Interface	M12. Lens is the default accessories	
Video	Motion Detect	396 (18*22) detection zones; sensitivity level ranges from 0 to 100; area threshold ranges from 0 to 100. Activation event: video storage, image snapshot, log, email function and etc.	
Record	Record Priority	Manual >Video detect>Schedule	

	Storage Management	NAS storage	
Network	Wire Network	1-ch 10/100 Base-T Ethernet	
	Network Protocol	Standard HTTP, TCP/IP, ARP,IGMP, ICMP, RTSP, RTP,UDP, RTCP, SMTP, FTP, DHCP, DNS, DDNS, PPPOE, UPNP, NTP, Bonjour, SNMP, QoS, 802.1x	
	Remote Operation	Monitor, system setup, file download, log information, maintenance , upgrade and etc	
	Protocol	PSIA, ONVIF	
General Parameter	IR light	IR light 30M.	
	Power	DC12V power, PoE. Note: 05 series does not support PoE.	
	Power Consumption	DC 12V 3.7W MAX	DC 12V 4.2W MAX
	Working Temperature	-30℃~+60℃	
	Working Humidify	≤95%	
	Dimensions(mm)	70*66*155	
	Weight	00 series:620g (excluding box) 05 series:420g (excluding box)	
	Installation	Install with bracket.	

Parameter \ Model		IPC-HFW1100S-W	IPC-HFW2200S-W
System	Main Processor	High performance DSP	
	OS	Embedded LINUX	
	System Resources	Support real-time network, local record, and remote operation at the same time.	
	User Interface	Remote operation interface such as WEB, DSS, PSS	
	System Status	Bit stream statistics, log, and software version.	
Video Parameter	Image Sensor	1/4-inch CMOS	1/3-inch CMOS
	Pixel	1280(H) *720(V)	2408(H) *1536(V)
	Day/Night Mode	Support day/night mode switch.	
	Gain Control	Fixed/Auto	
	White Balance	Manual/Auto	
	BLC	On/Off	
	Exposure Mode	Auto/Low noise/ Low motion blur/ Manual It ranges from 1/3 to 1/10000.	
	Video Compression Standard	H.264/H.264B/MJPEG	H.264/H.264B/H.264.H/MJPEG
	Video Frame Rate	PAL: Main stream(1280*720@25fps) extra stream(704*576@25fps),	PAL: Main stream(1920*1080@25fps) extra stream(704*576@25fps),
		NTSC: Main stream(1280*720@30fps)	NTSC: Main stream(1920*1080@30fps)

		extra stream(704*480@30fps),	extra stream(704*480@30fps),
	Video Bit Rate	H.264: 16Kbps-8192Kbps; MJPEG: adjustable and bit rate is adjustable. Support customized setup.	H.264H: 16Kbps-8192Kbps; MJPEG: adjustable and bit rate is adjustable. Support customized setup.
	Video Flip	Support mirror. Support flip function.	
	Snapshot	Max 1f/s snapshot. File extension name is JPEG.	
	Privacy Mask	Supports max 4 privacy mask zones	
	Video Setup	Support parameter setup such as bright, contrast and acutance.	
	Video Information	Channel title, time title, motion detect, tampering.	
	Lens	3.6mm, 6mm. Fixed focus.	
	Lens Interface	M12. Lens is the default accessories	
Video	Motion Detect	396 (18*22) detection zones; sensitivity level ranges from 0 to 100; area threshold ranges from 0 to 100. Activation event: video storage, image snapshot, log, email function and etc.	
Record and Backup	Record Priority	Manual >Video detect>Schedule	
	Storage Management	Support network storage status information	
Network	Wire Network	1-channel wire Ethernet port, 10/100 Base-T Ethernet	
	Wireless Network	IEEE802.11a/b/g/n, built-in antenna	
	Network Protocol	Standard HTTP, TCP/IP, ARP, IGMP, ICMP, RTSP, RTP,UDP, RTCP, SMTP, FTP, DHCP, DNS, DDNS, PPPOE, UPNP, NTP, Bonjour, SNMP.	
	Remote Operation	Monitor, system setup, file download, log information, maintenance , upgrade and etc.	
	Access Protocol	Support International, ONVIF	
Aux Interface	WPS	WI-FI one key connection	
	Restore Default	Support	
General Parameter	IR light	IR distance 30m	
	Power	DC12V	
	Power Consumption	4.9W MAX	7.3 W MAX
	Working Temperature	-30℃~+50℃	
	Working Humidify	≤95%	
	Dimensions(mm)	69*66*149	
	Weight	420g (excluding box)	

	Installation	Installation with the bracket.
--	---------------------	--------------------------------

2 Framework

2.1 Cable

You can refer to the following figure for cable information. See Figure 2- and Figure 2-2.

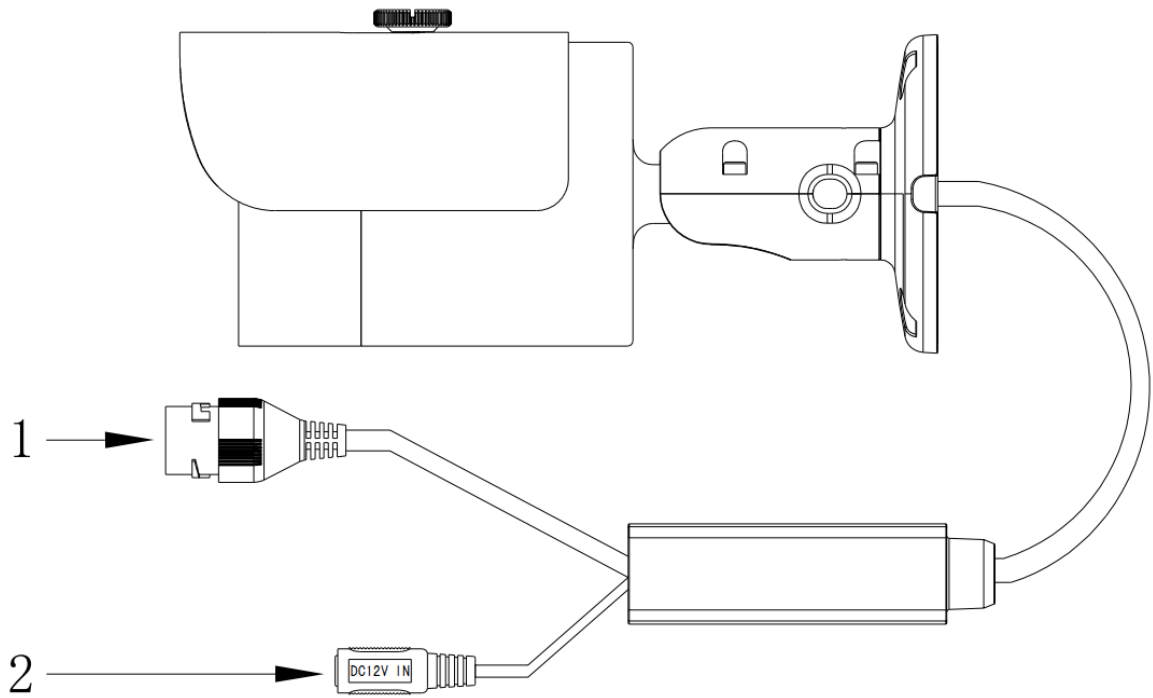


Figure 2-1 Cable

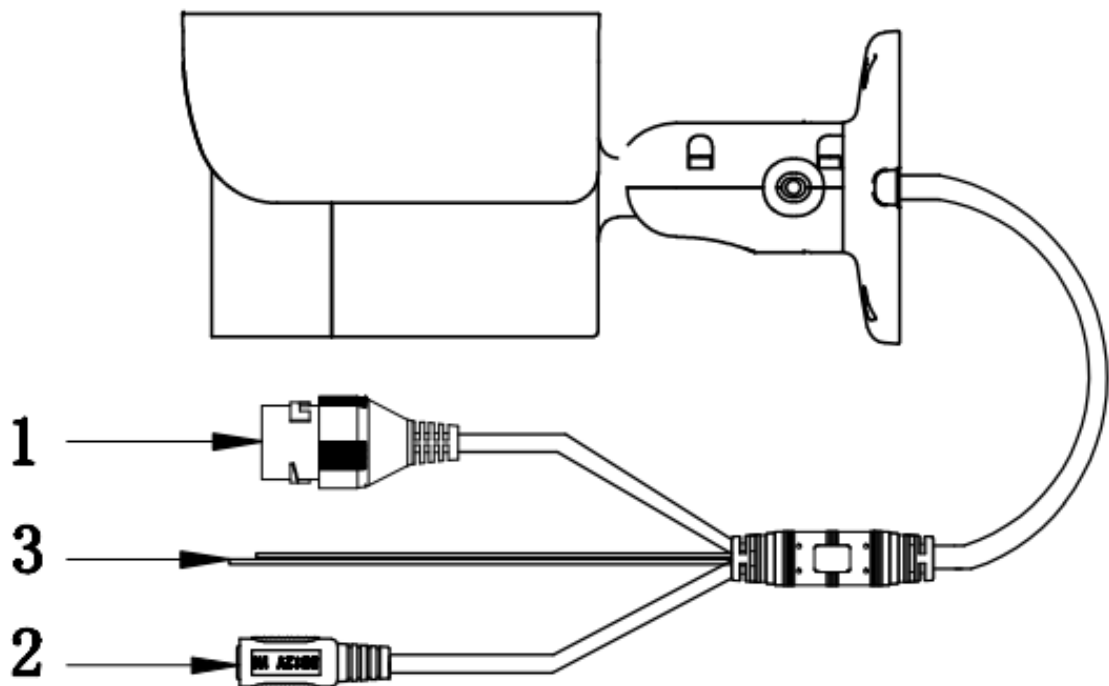


Figure 2-2 Cable

Please refer to the following sheet for detailed information.

No.	Port Name	Function	Connection	Note
1	LAN	Network port	Ethernet port	Connect to standard Ethernet cable. Note: Some devices do not support PoE.
2	DC 12V	Power input port	/	Power port. Input DC 12V.
3	Reset	WPS/Reset port	/	WPS/Hardware reset wire Press the WPS button of router, keep the Reset wire short circuit for 1-2 seconds, generally the device can be connected to corresponding router within 1 minute. Keep the Reset wire short circuit for more than 5 seconds when the device is under normal working condition, then the system configuration information can be restored to default setting.

2.2 Framework and Dimension

Please refer to the following figure for dimension information. The unit is mm. See Figure 2-3 to Figure 2-6.

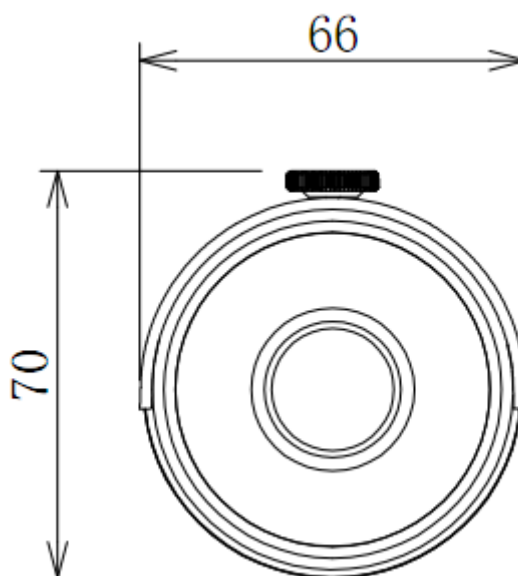


Figure 2-3

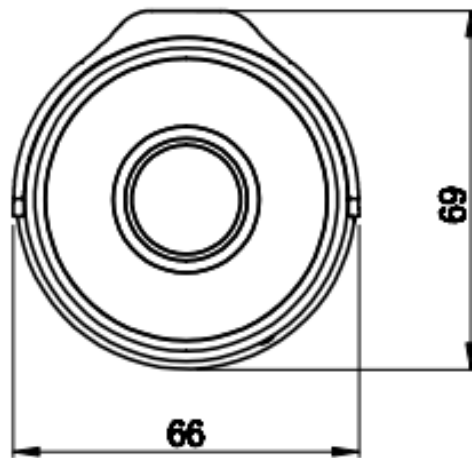


Figure 2-4

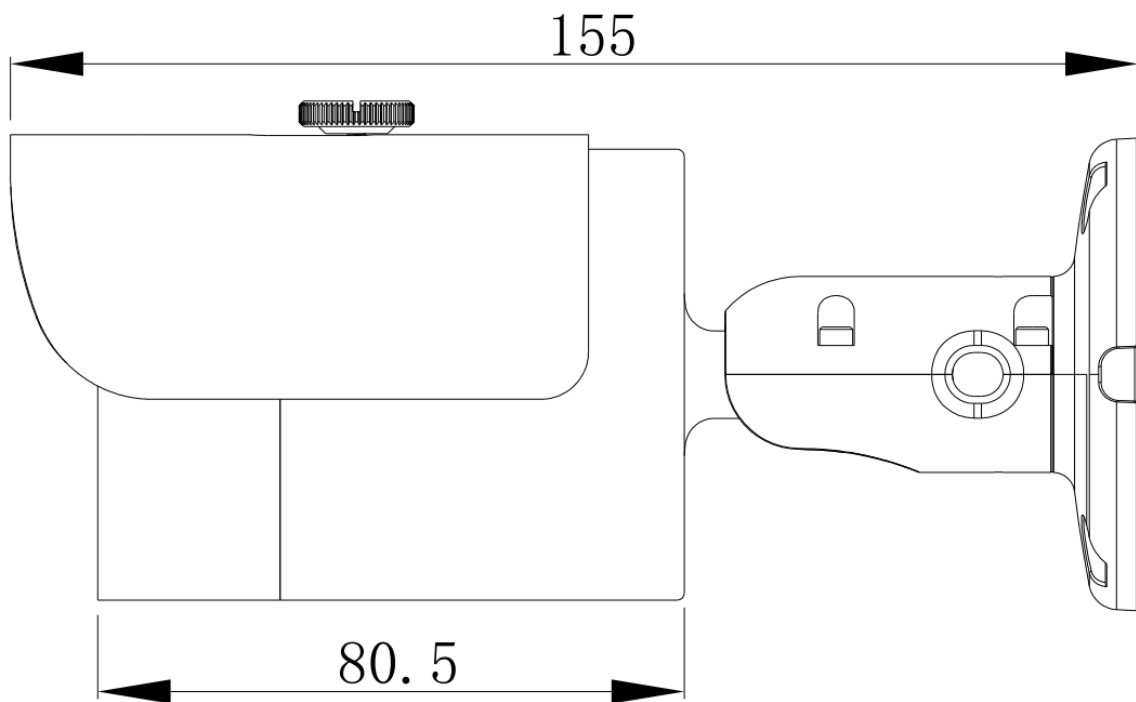


Figure 2-5

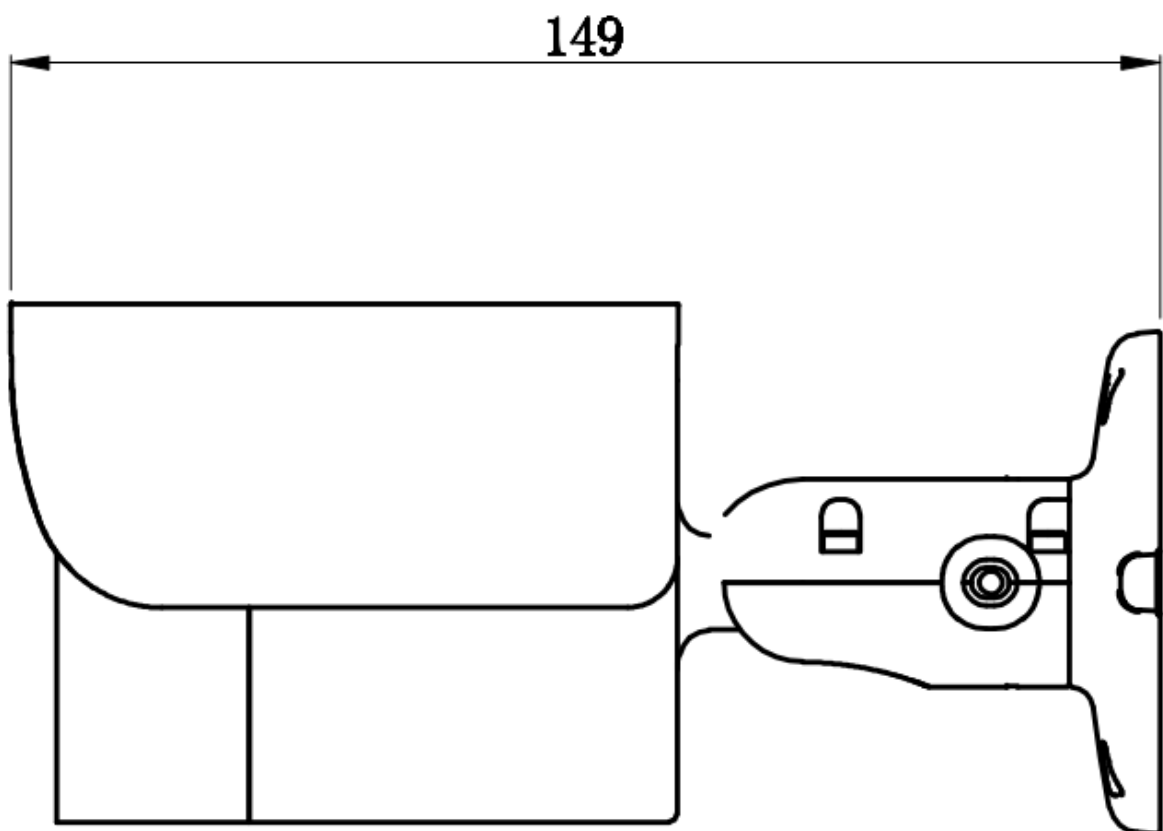


Figure 2-6

3 Device Installation

Important

Please make sure the installation surface can min support the 3X weight of the camera and the bracket.

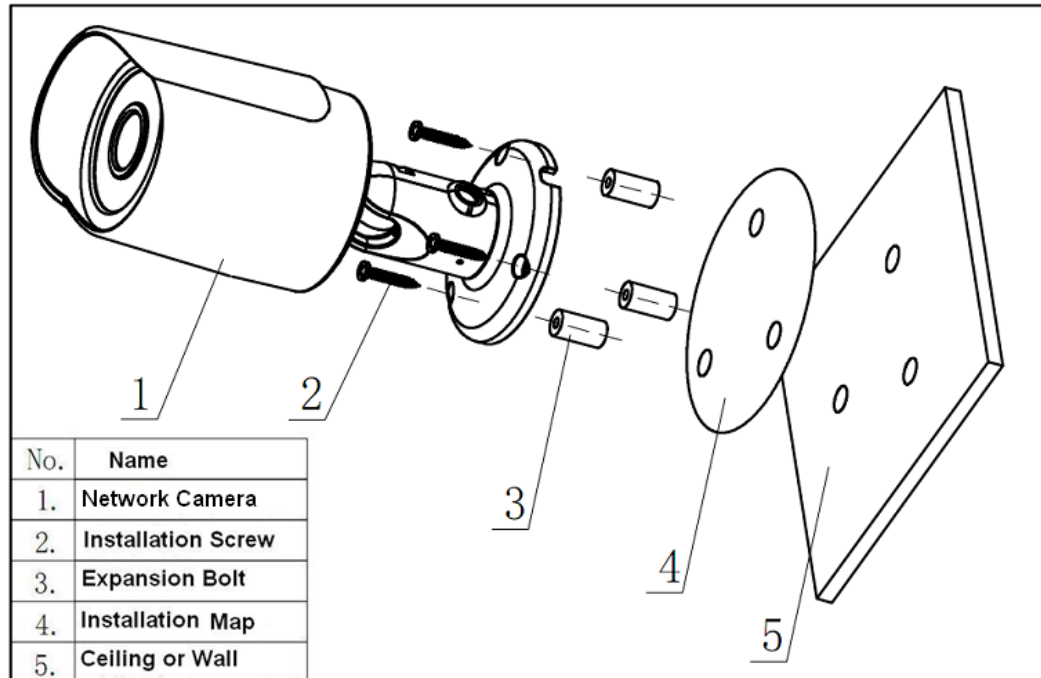


Figure 3-1 Device installation 1

Please see Figure 3-1 and Figure 3-2.

Step 1

Stick installation sticker to designated surface where you will install the device (wall or ceiling).

Step 2

Dig a hole according to position of hole on installation sticker.

Step 3

Open accessories bag, take out expansion bolt and insert it into the hole you just dug.

Step 4

Open accessories bag, take out screw. Tighten the 4 screws to fix the device on the installation surface (wall or ceiling). You can move device sunshade back and forth. When you have fixed the device, you must tighten screws on sunshade.

Step 5

Plug external wiring of the device properly.

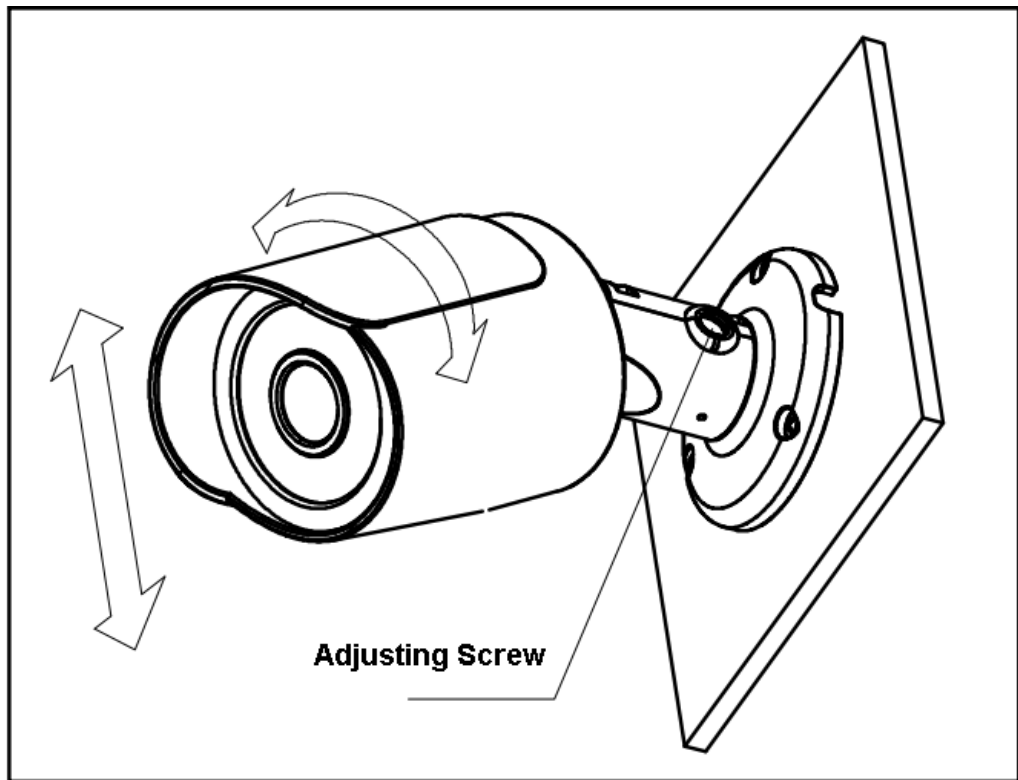


Figure 3-2 Device installation 2

Step 6

Use Philip's head screw (in accessories bag) to loosen adjusting screw.

Step 7

Adjust the device in all possible directions, and set its monitoring direction.

Step 8

Use Philip's head screw to tighten the screws.

4 Quick Configuration Tool

4.1 Overview

Quick configuration tool can search current IP address, modify IP address. At the same time, you can use it to upgrade the device.

Please note the tool only applies to the IP addresses in the same segment.

4.2 Operation

Double click the “ConfigTools.exe” icon, you can see an interface is shown as in Figure 4-1.

In the device list interface, you can view device IP address, port number, subnet mask, default gateway, MAC address and etc.

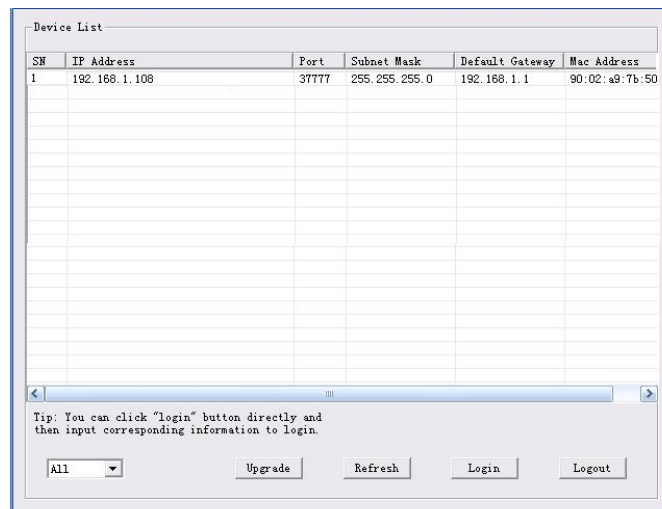


Figure 4-1 Search interface

Select one IP address and then right click mouse, you can see an interface is shown as in Figure 4-2.

Select the “Open Device Web” item; you can go to the corresponding web login interface.

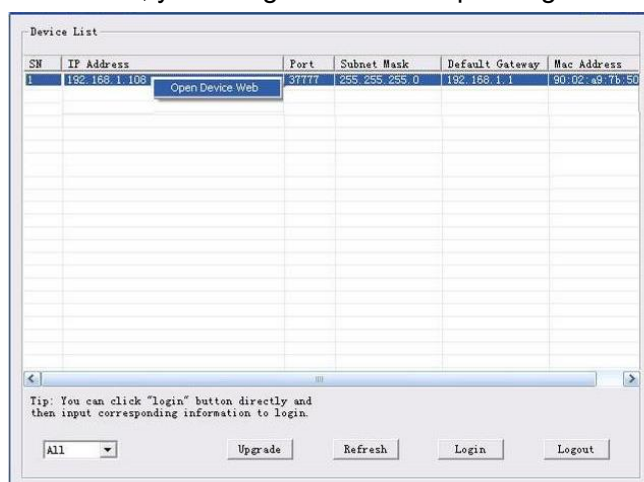


Figure 4-2 Search interface 2

If you want to modify the device IP address without logging in the device web interface, you can go to the configuration tool main interface to set.

In the configuration tool search interface (Figure 4-1), please select a device IP address and then double click it to open the login interface. Or you can select an IP address and then click the Login button to go to the login interface. See Figure 4-3.

In Figure 4-3, you can view device IP address, user name, password and port. Please modify the corresponding information to login.

Please note the port information here shall be identical with the port value you set in TCP port in Web Network interface. Otherwise, you cannot login the device.

If you are using device background upgrade port 3800 to login, other setups are all invalid.

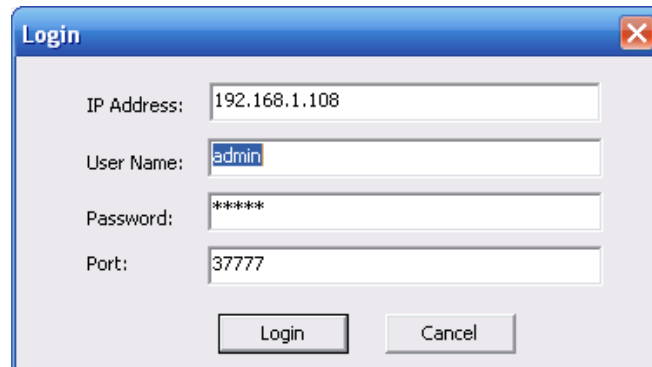
A login dialog box titled "Login" with a close button in the top right corner. It contains four input fields: "IP Address" with the value "192.168.1.108", "User Name" with the value "admin", "Password" with the value "*****", and "Port" with the value "37777". At the bottom, there are two buttons: "Login" and "Cancel".

Figure 4-3 Login prompt

After you logged in, the configuration tool main interface is shown as below. See Figure 4-4.

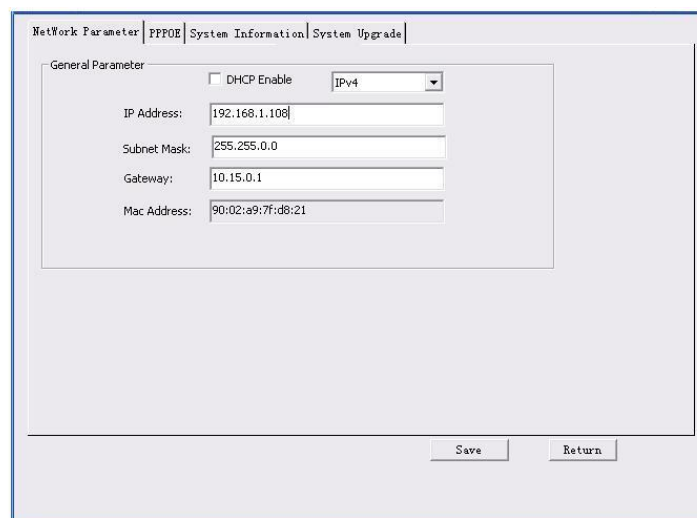
The main configuration interface of the tool. It has a tabbed menu at the top with "Network Parameter", "PPPOE", "System Information", and "System Upgrade". The "Network Parameter" tab is selected. Inside, there is a "General Parameter" section with a "DHCP Enable" checkbox (unchecked) and a "IPv4" dropdown menu. Below these are five input fields: "IP Address" (192.168.1.108), "Subnet Mask" (255.255.0.0), "Gateway" (10.15.0.1), and "Mac Address" (90:02:a9:7f:d8:21). At the bottom right, there are "Save" and "Return" buttons.

Figure 4-4 Main interface

For detailed information and operation instruction of the quick configuration tool, please refer to the *Quick Configuration Tool User's Manual* included in the resources CD.

5 Web Operation

This series network camera products support the Web access and management via PC. Web includes several modules: Monitor channel preview, system configuration, alarm and etc.

5.1 Network Connection

Please follow the steps listed below for network connection.

- Make sure the network camera has connected to the network properly.
- Please set the IP address, subnet mask and gateway of the PC and the network camera respectively. Network camera default IP address is 192.168.1.108. Subnet mask is 255.255.255.0. Gateway is 192.168.1.1
- Use order ping `***.***.***.***(* network camera address)` to check connection is OK or not.

5.2 Login and Main Interface

Open IE and input network camera address in the address bar. See Figure 5- 1.

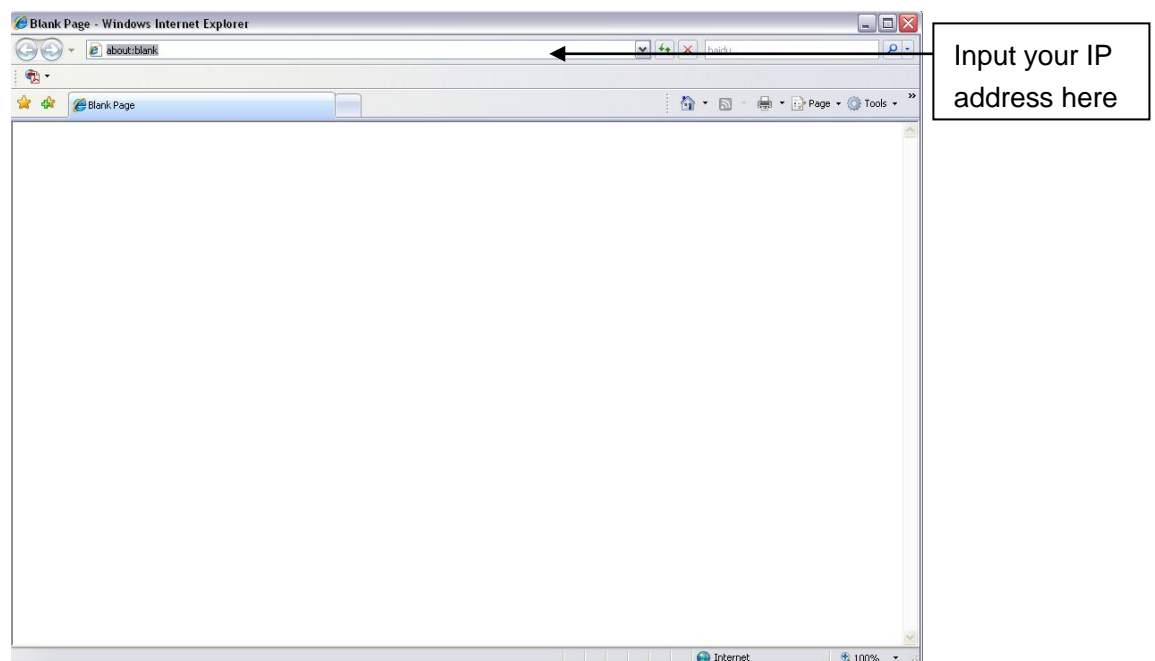


Figure 5- 1 IP address

The login interface is shown as below. See Figure 5- 2.

Please input your user name and password.

Default factory name is admin and password is admin.

Note: For security reasons, please modify your password after you first login.



Figure 5- 2 Web login

After you successfully logged in, please install WEB plug-in unit. Please refer to the Web Operation Manual included in the resource CD for detailed operation instruction.
See Figure 5- 3.

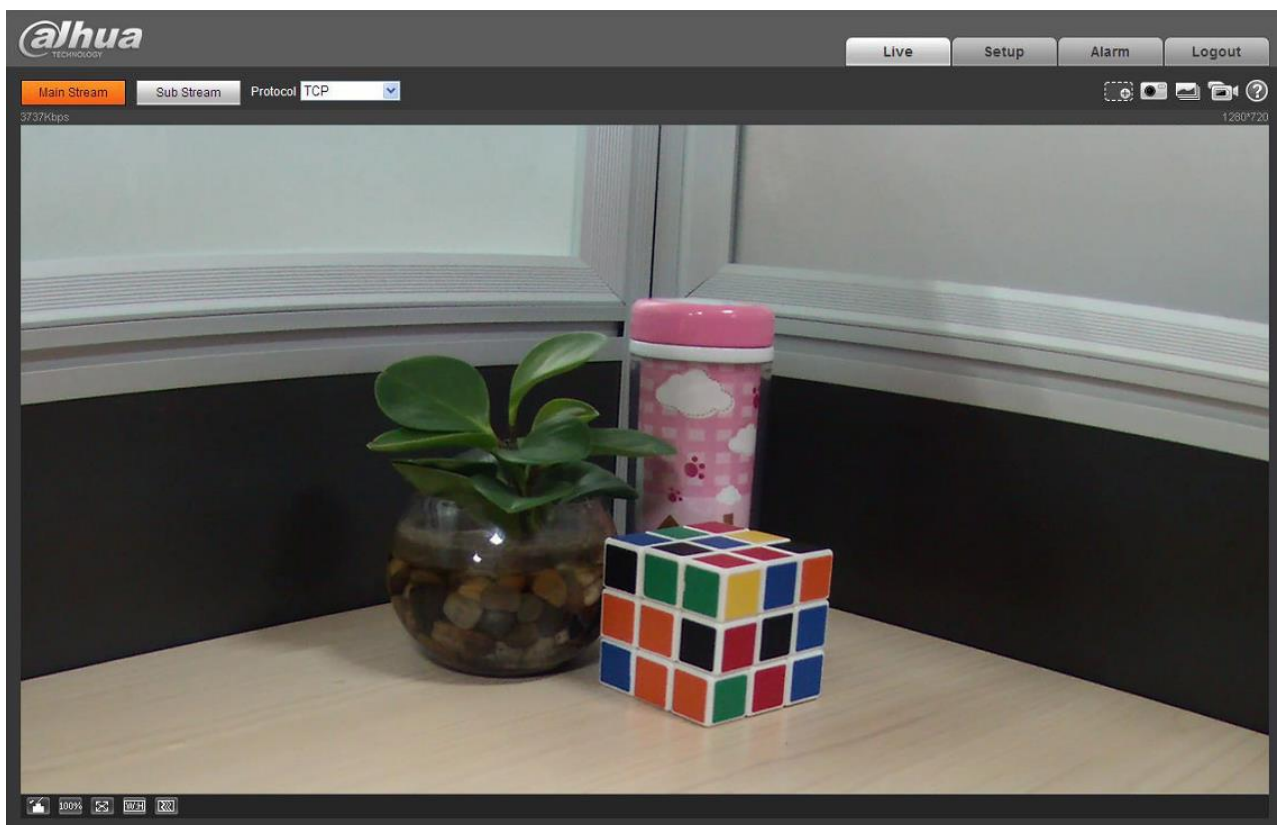


Figure 5- 3 Web monitoring window

6 FAQ

Bug	
I can not boot up the device or operate properly.	Please click RESET button for at least five seconds to restore factory default setup.
The water leakage occurred.	<ul style="list-style-type: none"> ● The unauthorized front or rear cap remove many result in water leakage. ● The glass front cap has sustained heavy push or strike. ● The waterproof plug of the rear cap becomes loosen.
IR video is poor.	<ul style="list-style-type: none"> ● Did not use the proper supplying power. The IR light can not turn on completely. ● The object is out of the IR distance range of current device. ● IR-CUT does not turn to the night mode. The photosensitive chip of the front-end can not sense the IR light.
I can not upgrade the device via network.	When network upgrade operation failed, you can use port 3800 to continue upgrade.
I can not login the client-end or the WEB.	<ul style="list-style-type: none"> ● For Windows OS 98 or Windows ME user, if you can not install the client-end or can not view after the installation. We recommend the win2000 sp4 OS or higher, or install the client-end of the low version. ● The Active X control is blocked. ● The display card version shall be dx8.1 or higher. ● Network connection error occurred. ● Invalid network setup. ● Invalid user name or password. ● Client version and device program do not match.
I can not play the download file.	<ul style="list-style-type: none"> ● There is no player. ● There is no DX8.1 or higher. ● For the MEDIA PLAYER, there shall be Div X503Bundle.exe plug in if you play the .AVI file. ● For Windows XP user, you need to install the plug in DivX503Bundle.exe and ffdsho-2004 1012.exe.
To guarantee setup update	After you modified the important setup, please reboot the device via the software to make sure the setup has been updated to the storage medium.
Power adapter	<ul style="list-style-type: none"> ● The general power adapter can work ranging from 0℃ to 40 ℃. The device may result in unstable power supply when the temperature exceeds the working temperature. ● Please replace an industry-level power adapter if you are using in the harsh environments.

Appendix Toxic or Hazardous Materials or Elements

Component Name	Toxic or Hazardous Materials or Elements					
	Pb	Hg	Cd	Cr VI	PBB	PBDE
Circuit Board Component	○	○	○	○	○	○
Device Case	○	○	○	○	○	○
Wire and Cable	○	○	○	○	○	○
Packing Components	○	○	○	○	○	○
Accessories	○	○	○	○	○	○

O: Indicates that the concentration of the hazardous substance in all homogeneous materials in the parts is below the relevant threshold of the SJ/T11363-2006 standard.

X: Indicates that the concentration of the hazardous substance of at least one of all homogeneous materials in the parts is above the relevant threshold of the SJ/T11363-2006 standard. During the environmental-friendly use period (EFUP) period, the toxic or hazardous substance or elements contained in products will not leak or mutate so that the use of these (substances or elements) will not result in any severe environmental pollution, any bodily injury or damage to any assets. The consumer is not authorized to process such kind of substances or elements, please return to the corresponding local authorities to process according to your local government statutes.

Note

- This user's manual is for reference only. Slight difference may be found in user interface.
- All the designs and software here are subject to change without prior written notice.
- All trademarks and registered trademarks mentioned are the properties of their respective owners.
- If there is any uncertainty or controversy, please refer to the final explanation of us.
- Please visit our website for more information.



Zhejiang Dahua Technology CO., LTD.

Address: No.1199 Bin'an Road, Binjiang District, Hangzhou, PRC.

Postcode: 310053

Tel: +86-571-87688883

Fax: +86-571-87688815

Email: overseas@dahuatech.com

Website: www.dahuatech.com