

The JA-151TH Wireless temperature detector

The JA-151TH is a wireless component of the **JABLOTRON 100** system. It serves for temperature measurement and forwarding measured data to the Web Self Service (WSS). The WSS manages and stores measured data for possible future use. For instance SMS reporting of exceeding temperature limits or for creating graphs of measured temperatures. These functions are programmable in the WSS. The detector should be installed by a trained technician with a valid certificate issued by an authorised distributor.

Installation

Select the installation place according to the temperature measuring requirements. It is not recommended to install the detector near heat sources (heaters, electric fans, air conditioning outlets, fireplace inserts,...). They could influence the measuring. The detector can also be installed in an outdoor environment but it has to be placed into a suitable box with a minimum of IP65 covering.

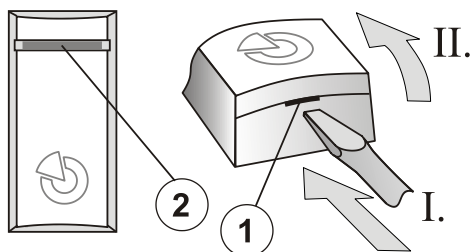


Figure 1: 1 – cover tab; 2 – LED indication

1. Open the detector cover by pushing the tab (1).
2. Attach the plastic base to the required place using screws.
3. There must be a JA-110R radio module installed in the system. Then enroll the detector to the control panel. Go to the **F-link** software, select the required position in the **Devices** tab and launch the enrollment mode by clicking on the **Enroll** option. The enrollment is transmitted when the battery is inserted into the detector.
4. Close the detector cover.

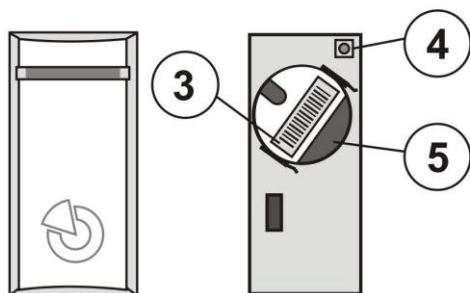


Figure 2: 3 – production code; 4 – discharging button; 5 – battery

Notes:

Enrolling the detector to the system is possible by entering the production code (3) via F-Link software. All digits in the production code are required (1400-00-0000-0001).

Cooperation with the Web Self Service

After logging in to the WSS or the My Jablotron application the states of all thermometers enrolled to the system are loaded in the Thermometers tab. Loading the temperatures is done automatically in 5 minute intervals. Then it is also possible to show the graph of measured temperatures and the required time line. In the WSS there is the item **Settings / Thermometer notification** where you can set a higher and a lower limit for every single thermometer. When one of these limits is exceeded or gone below then a report from WSS is sent. You can choose if by SMS or an e-mail. Following the temperatures can be set for some part of a day.

Binding of PG outputs

The detector has a fixed working temperature of +6°C with $\pm 2^\circ\text{C}$ hysteresis (i.e. the detector has an activation temperature of +5°C and from this temperature down it is switched on. The deactivation temperature is +7°C and from this temperature up it is switched off.). By F-Link software, activations / deactivations at those temperatures can be set for each JA-100 system:

- Devices / 24 hours
- Devices / Special reports
- PG outputs / Activation / By a device

Battery replacement

The system sends a report automatically when the battery is low. It is not necessary to switch the system to service mode (this detector has no tamper contact).

Battery replacement - Please use the discharging button (4) to discharge the rest of the energy from the detector. And then insert a new battery.

Battery replacement and learn to different control panel - Remove battery and press discharging button (4) if you need to enroll the detector to different control panel. Then insert battery back to the detector for enrolling to the new control panel.

Technical parameters

Power	1x lithium battery, typ CR2032 (3.0V, 220 mAh)
Typical battery lifetime	about 2 years
Communication band	868.1 MHz, JABLOTRON protocol
RF range	up to 200m (open area)
Dimensions	55 x 27 x 16 mm
Temperature measurement range	-20 to +60 °C
Operational temperature	-20 to +60 °C
Temperature measurement range accuracy	$\pm 0.1^\circ\text{C}$
Also complies with	ETSI EN 300220, EN 60950-1, EN 50130-4, EN 55022



JABLOTRON ALARMS a.s. hereby declares that the JA-151TH module is in compliance with the essential requirements and other relevant provisions of Directive 1999/5/EC, 2011/65/EU. The original of the conformity assessment can be found at www.jablotron.com – Technical Support section



Note: Although this product does not contain any harmful materials we suggest you return the product to the dealer or directly to the producer after use. For more detailed information visit www.jablotron.com