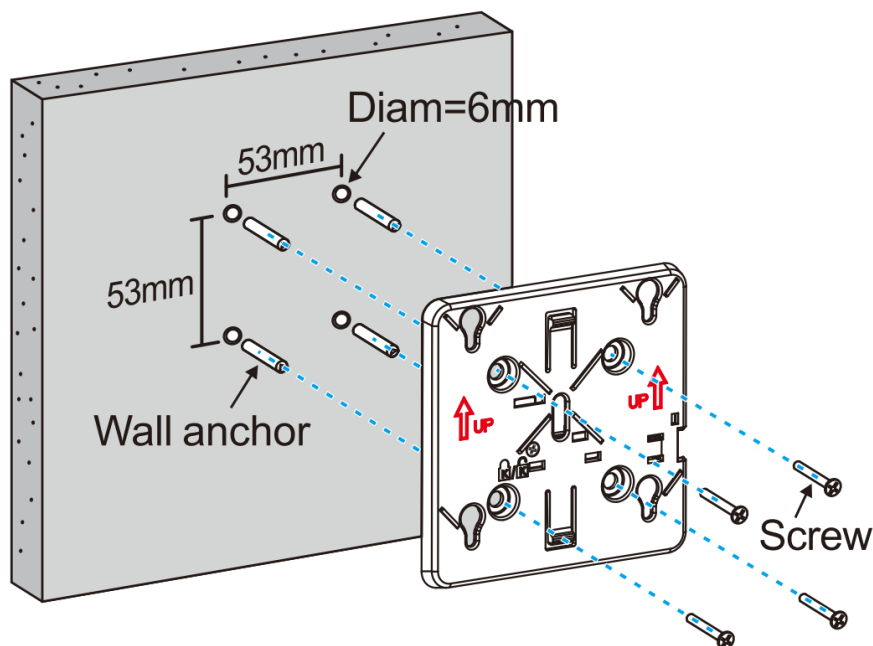


RG-AP840-L Wireless Access Point

Quick Installation Guide

Method 1: Wall Mounting

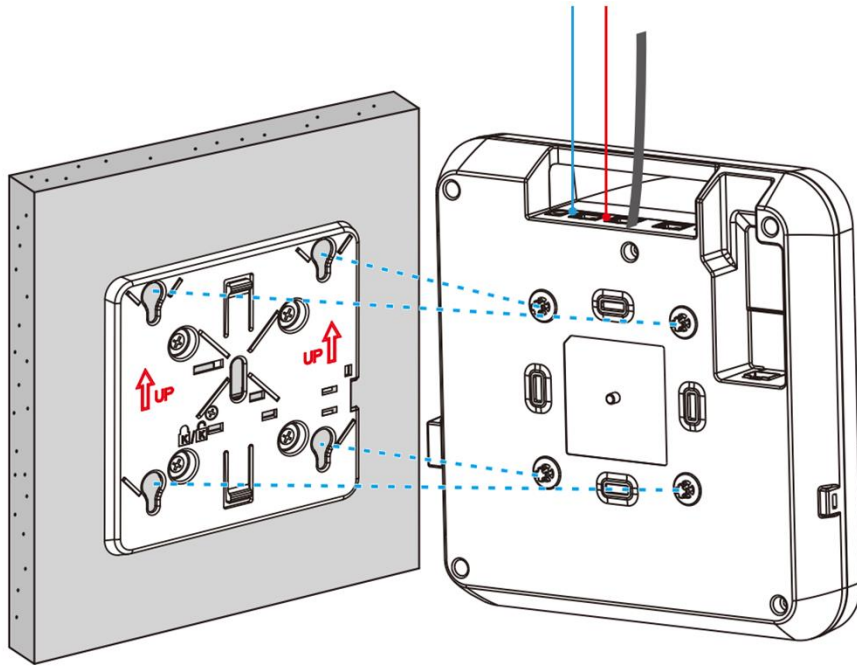
1



Drill four holes on the wall, insert the anchors into the holes with the arrow on the mounting bracket facing up, and attach the mounting bracket to the wall using screws.

2

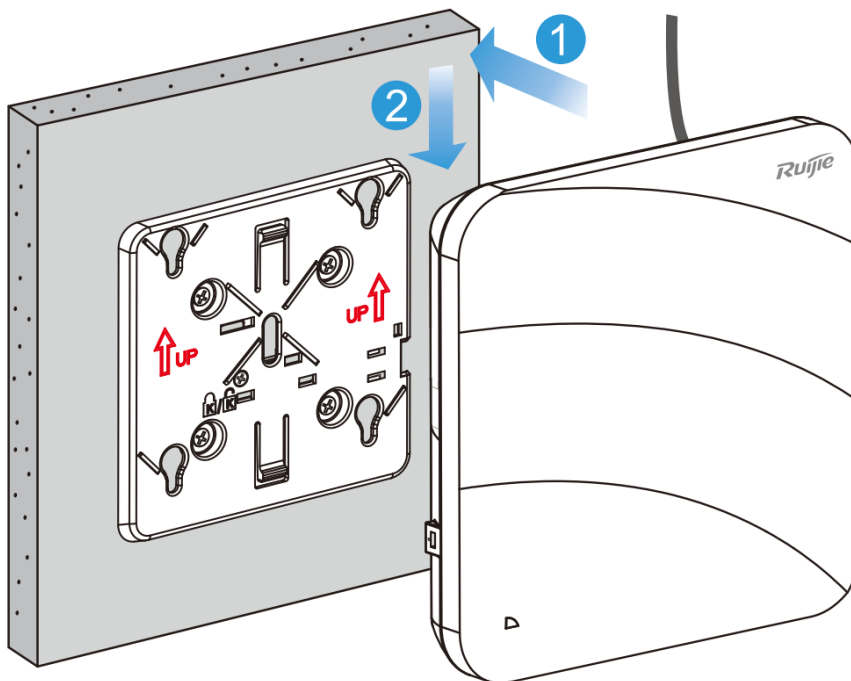
DC power supply or PoE power supply



⚠ Install the Ethernet cable first before you mount the AP onto the brackets.

Align the square feet on the rear of the AP over the mounting holes on the bracket.

3

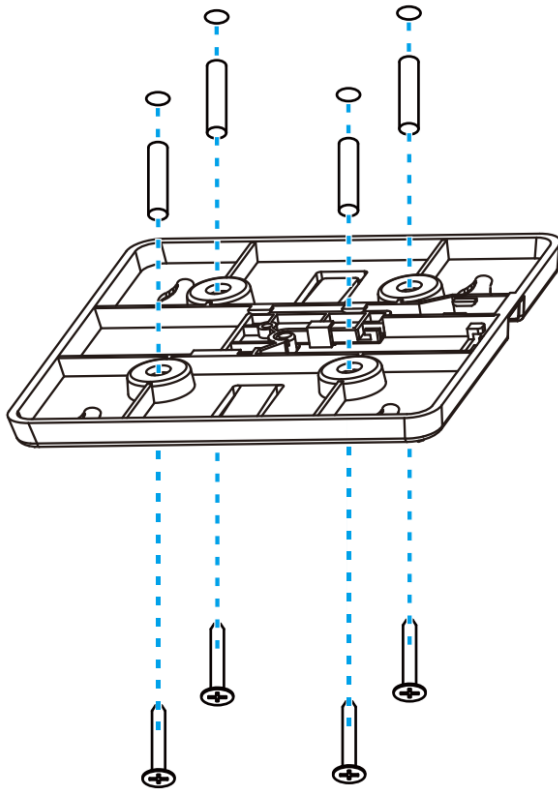


⚠ Keep the logo of Ruijie upward.

Slide the AP onto the bracket until it clicks into place.

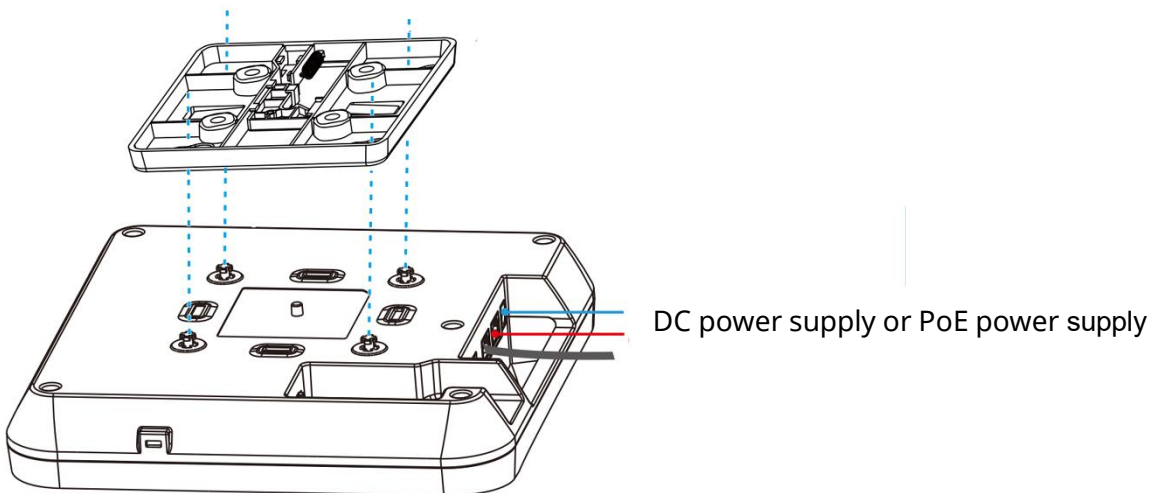
Method 2: Ceiling Mounting

1



Drill four holes on the ceiling, tap the wall anchors into the holes, and attach the mounting bracket to the wall using the screws.

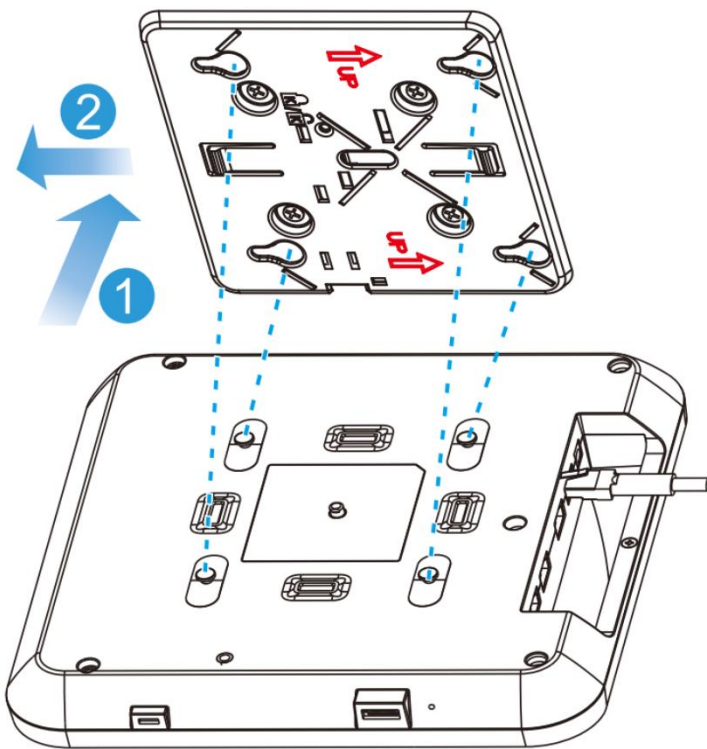
2



 Install the Ethernet cable first before you mount the AP onto the brackets.

Align the square feet on the rear of the AP over the mounting holes on the bracket.

3

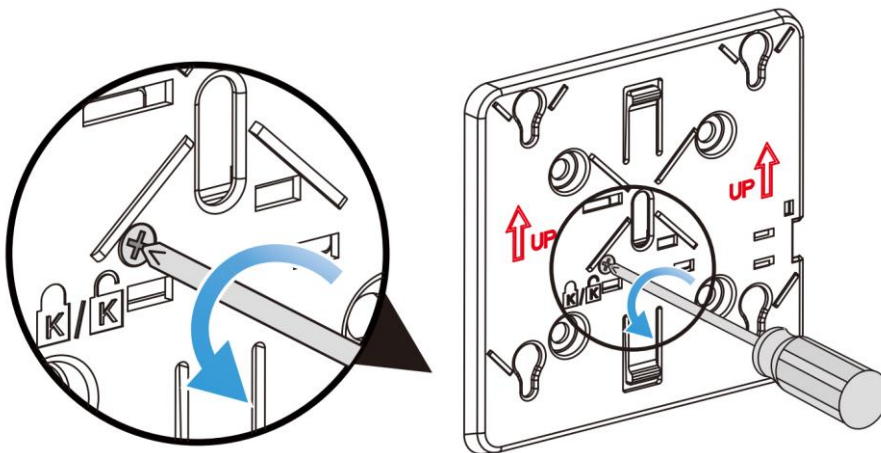


⚠ For ease of cable routing, you can adjust the direction of the AP accordingly.

Slide the AP onto the bracket in the reverse direction against the arrow on the mounting bracket until it clicks into place.

(Optional) Enable Hidden Lock

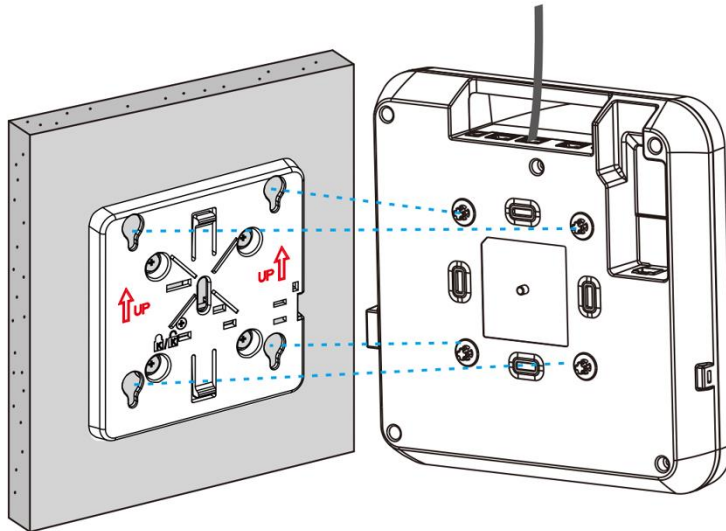
1



loosen the screw

Loosen the screw on the mounting bracket and enable the hidden lock.

2



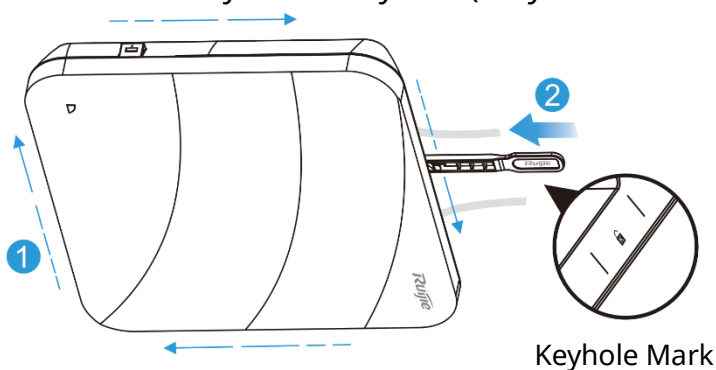
⚠ Install the Ethernet cable first before you mount the AP onto the brackets.

Align the square feet on the rear of the AP over the mounting holes on the bracket.

Removing the AP

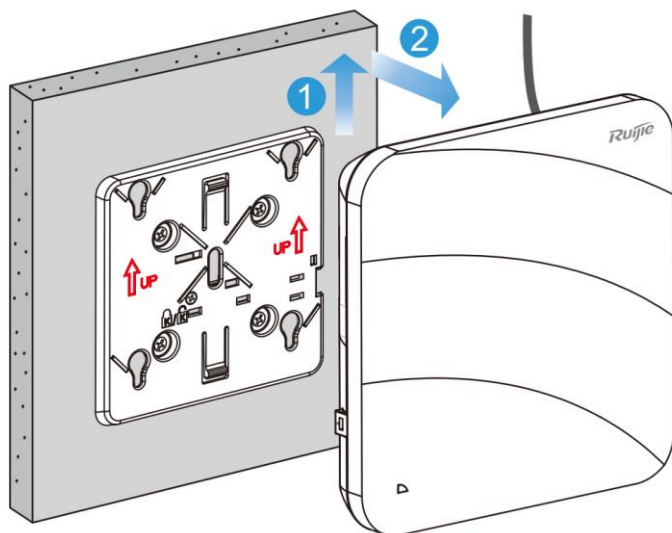
❶ If the hidden lock is enabled, attach the front part of the key to the edge of the mounting bracket (keep the Ruijie logo of the key toward the top panel of the AP).

❷ Slide the key along with the four edges of the mounting bracket, and attempt to insert the key to the keyhole (only one marked keyhole can be inserted).



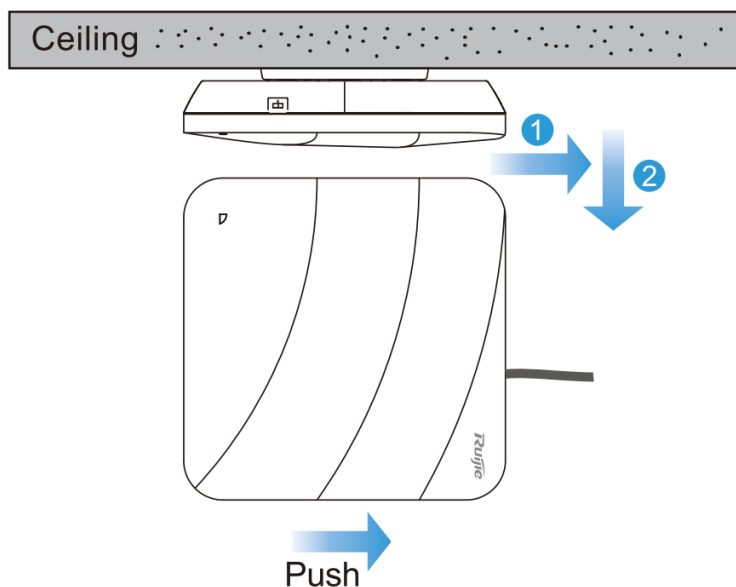
Unlock the hidden lock. If you hear a click sound after the key is inserted into the keyhole and the key cannot be pulled out, the unlocking is successful.

Removing the Wall-Mount AP:



Hold the AP in your hands and push it upward in the LAN port direction.

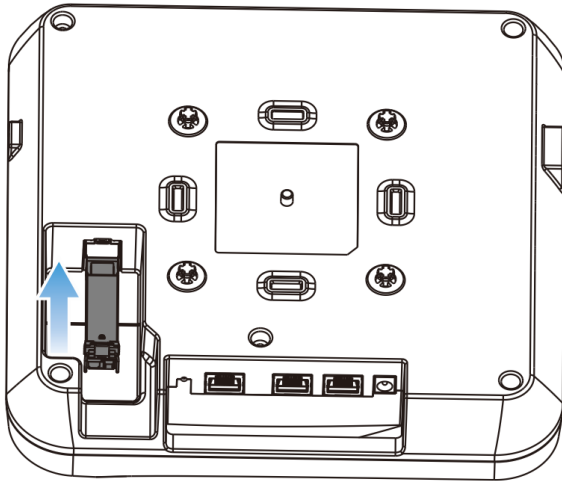
Removing the Ceiling-Mount AP:



Hold up the two sides of the AP with hands, and attempt to push it in four directions (the AP can be pushed out only in one direction).

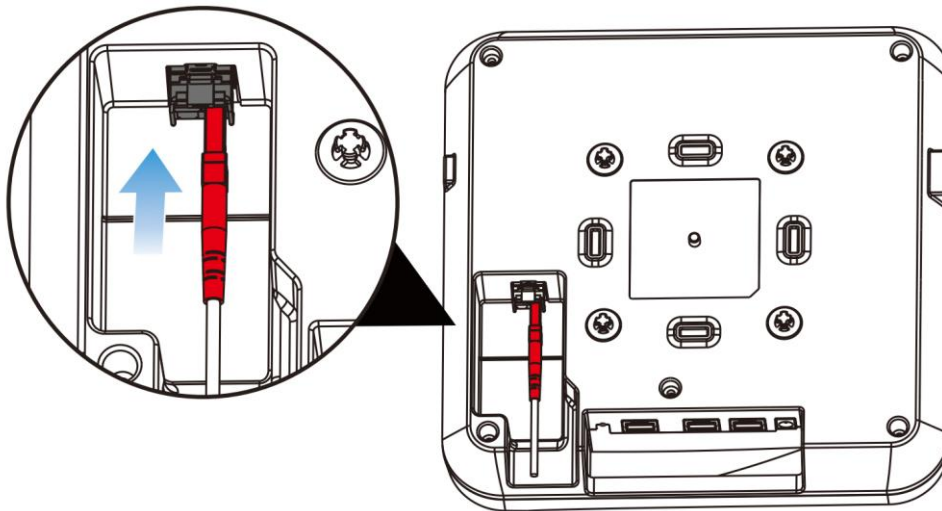
Installing Optical Module

1



Insert the SFP

2



Installing Optical Module.

Thank you for choosing Ruijie Networks products. You can obtain the latest quick installation guide at <https://www.ruijienetworks.com/resources/products/>.