

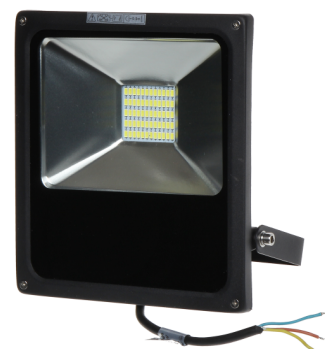
# LED ILLUMINATORS

Series: STH

The LED illuminator for outdoor and indoor use. It has incomparably greater lifetime of the LEDs compared to traditional halogen bulb and provides cost-effective and trouble-free operation. The use of multiple LEDs allows for better heat dissipation and longer life of the illuminator.

Main features:

- solid metal housing
- 80% lower consumption of energy
- long lifetime of the lamp
- the LED SMD5730 modern technology

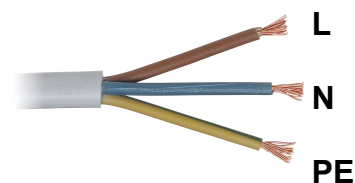


## Technical Specification

LED Type	SMD 5730
Power	10/20/30/50 W
Luminous Flux	800/1600/2700/4500 lm
Energy Class	A++
CRI	>70
Color Temperature	4000 - 4500 K
Illumination Angle	120 °
Power Factor	> 0.95
LED Lifetime	>35000 h
Power Supply	110 ... 240 V AC , 50/60 Hz
Operation Temperature	-20 ... 50 °C
Store Temperature	-40 ... 60 °C
Index of Protection	IP65
Housing	Metal

## DEVICE INSTALLATION

Illuminator must be connected to the mains with the PE grounding wire!



Installation of the unit should be performed by a person with appropriate permissions.

Before connecting the unit, turn off the mains power (switch off the fuse).

